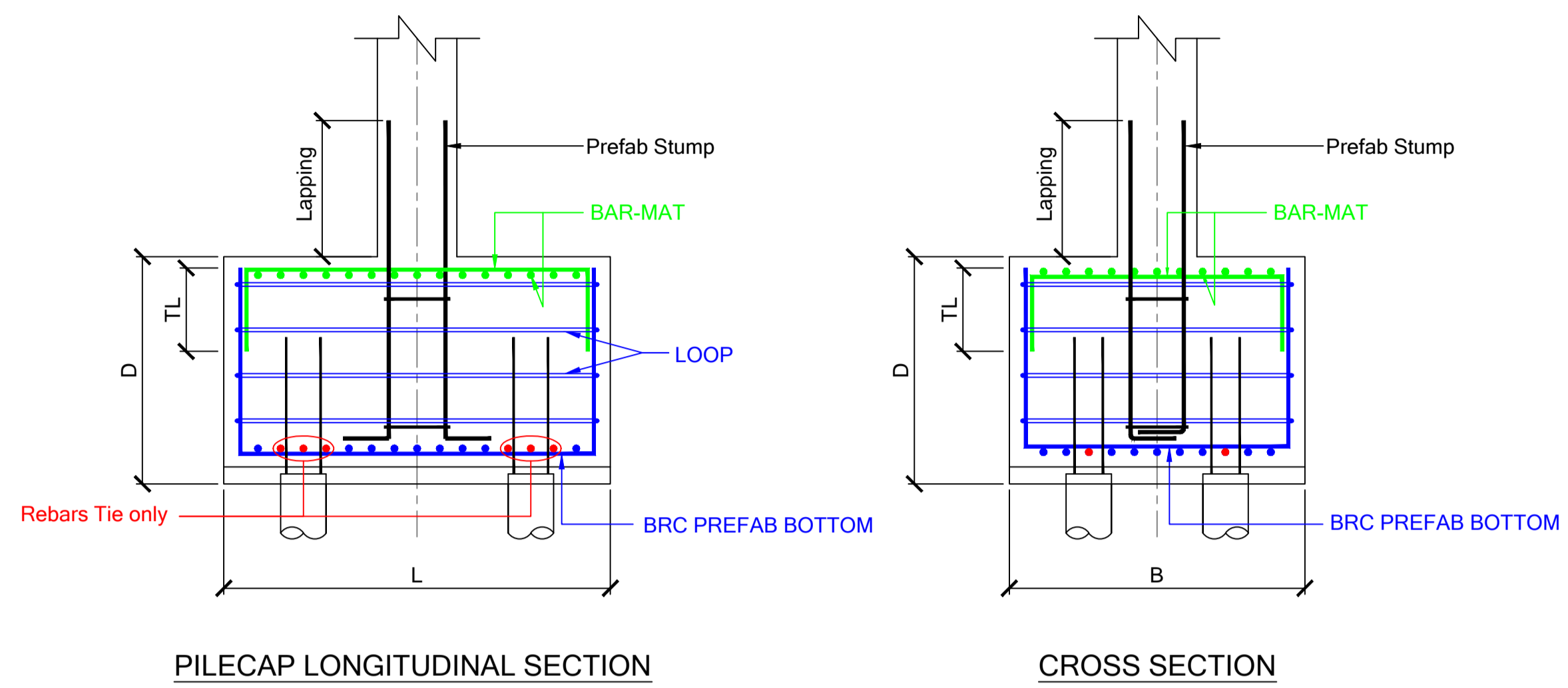


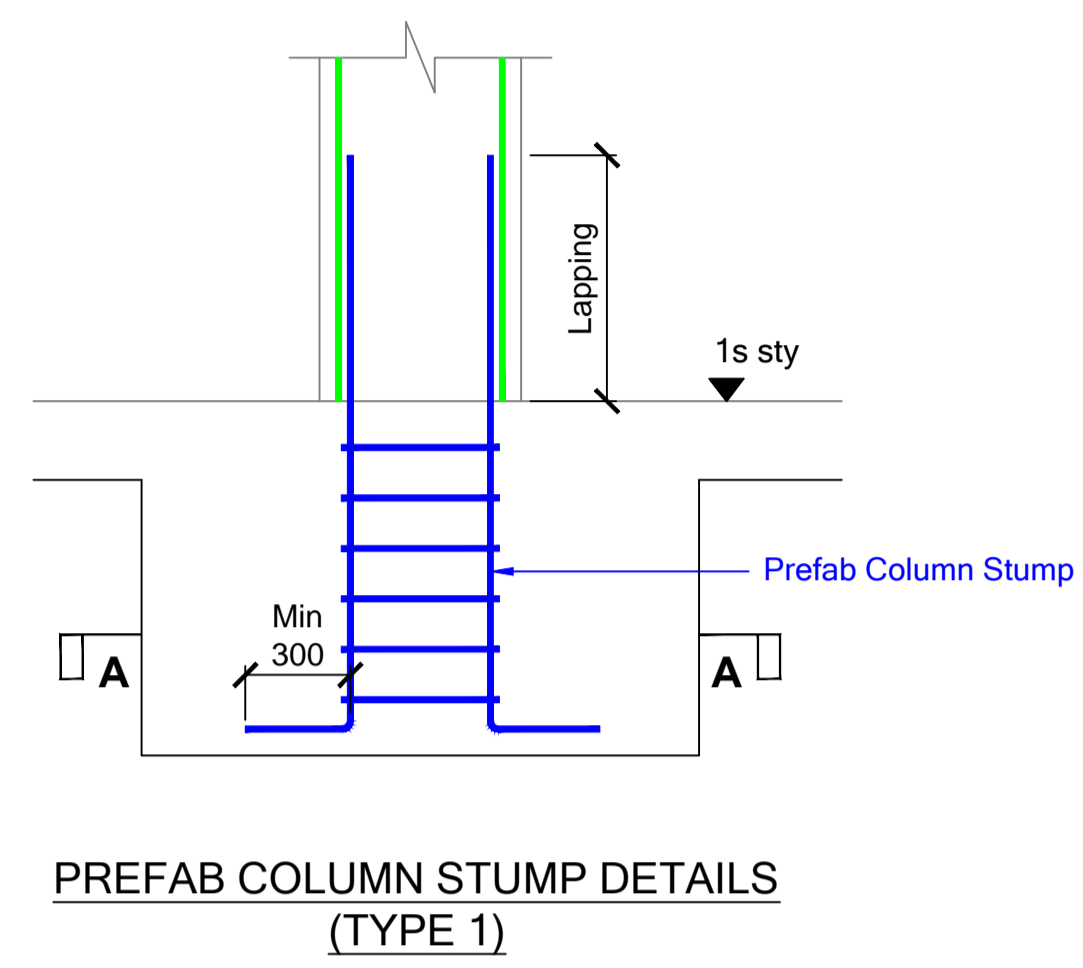
NOTES:
 SUBJECT TO MANUFACTURING AND TRANSPORTATION CONSTRAN.
 Disclaimer: These drawings and detailing are for reference only and BRC is not liable for any consequences from the use of these drawings and detailing.

PREFAB PILECAP & STUMP



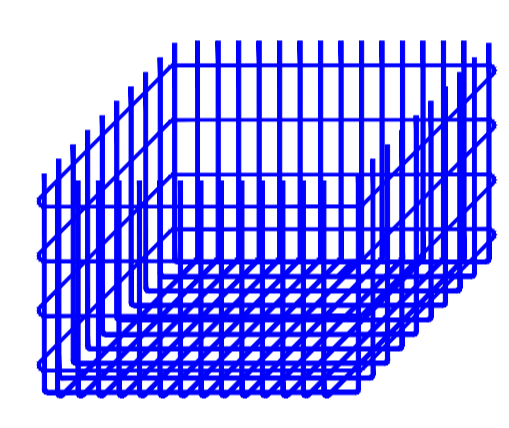
PILECAP LONGITUDINAL SECTION

CROSS SECTION

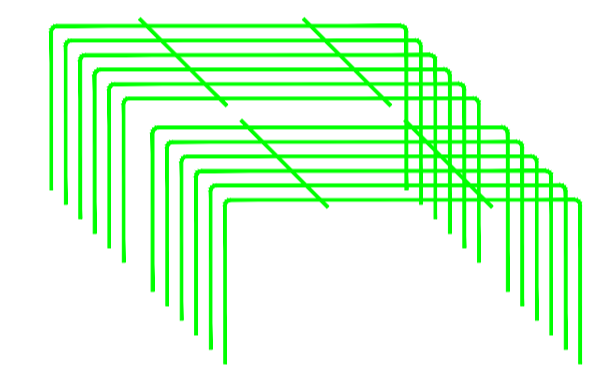


PREFAB COLUMN STUMP DETAILS (TYPE 1)

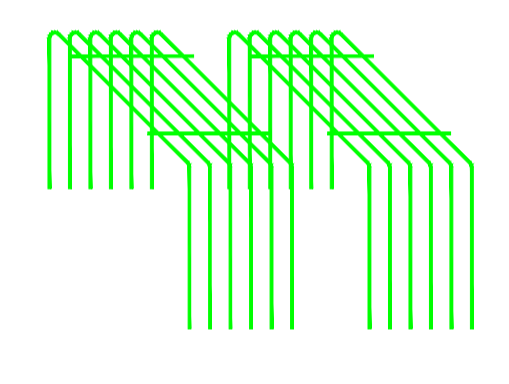
SECTION A-A



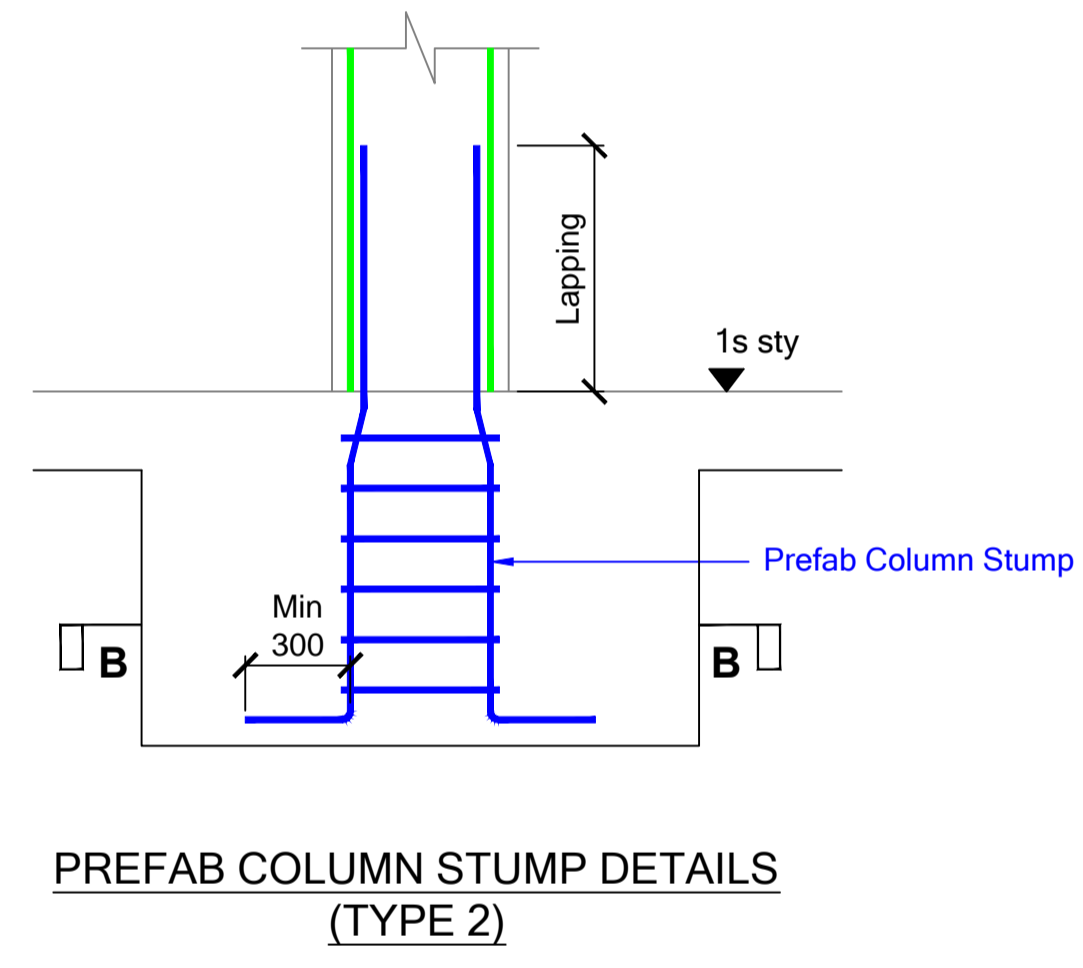
BOTTOM PREFAB



TOP BAR-MAT (T2)

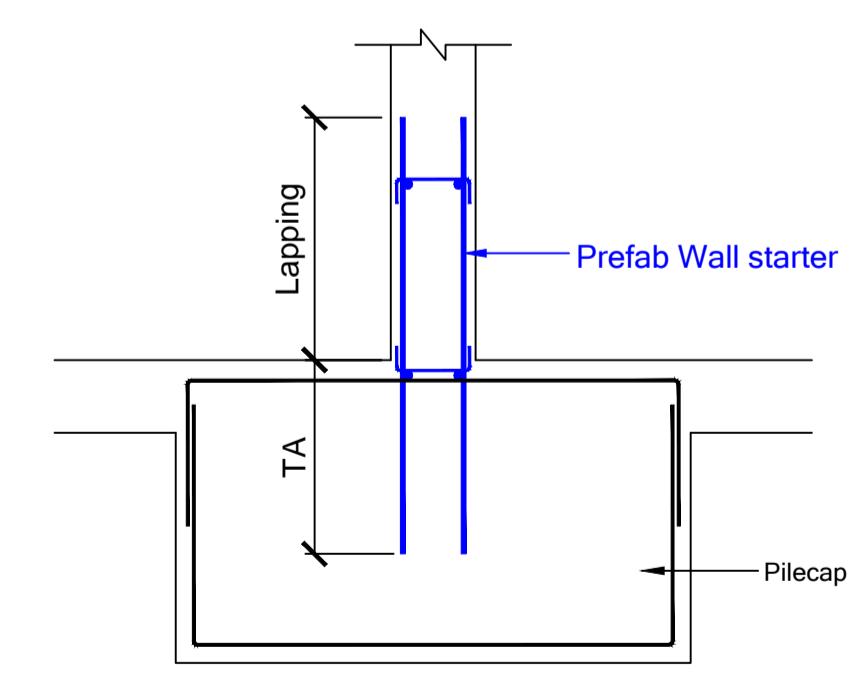


TOP BAR-MAT (T1)

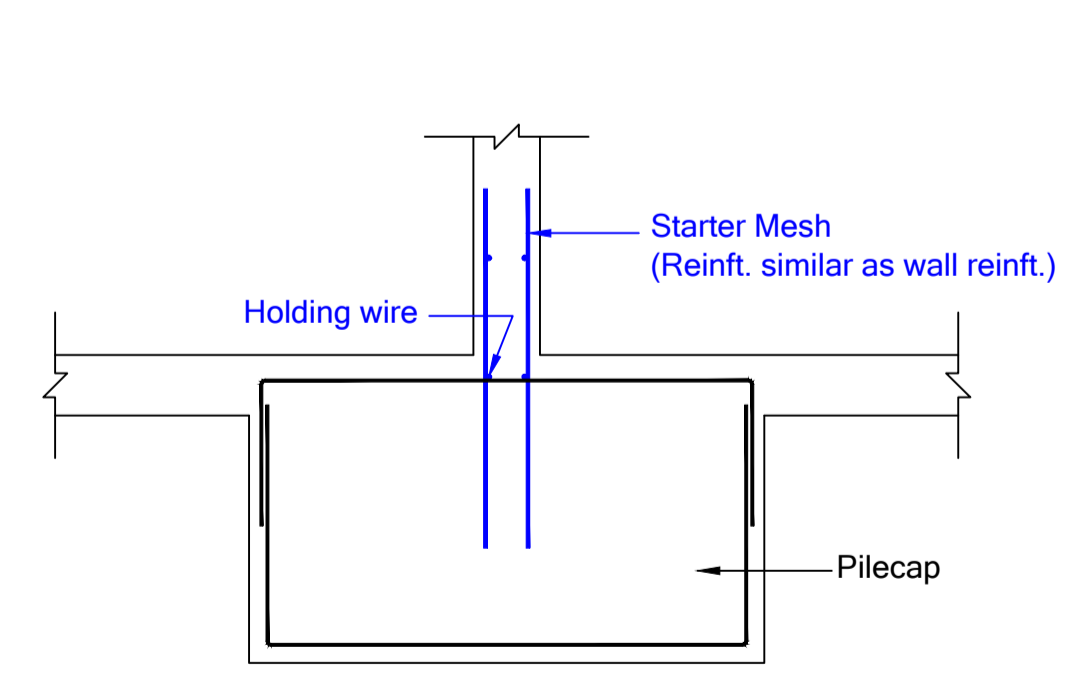


PREFAB COLUMN STUMP DETAILS (TYPE 2)

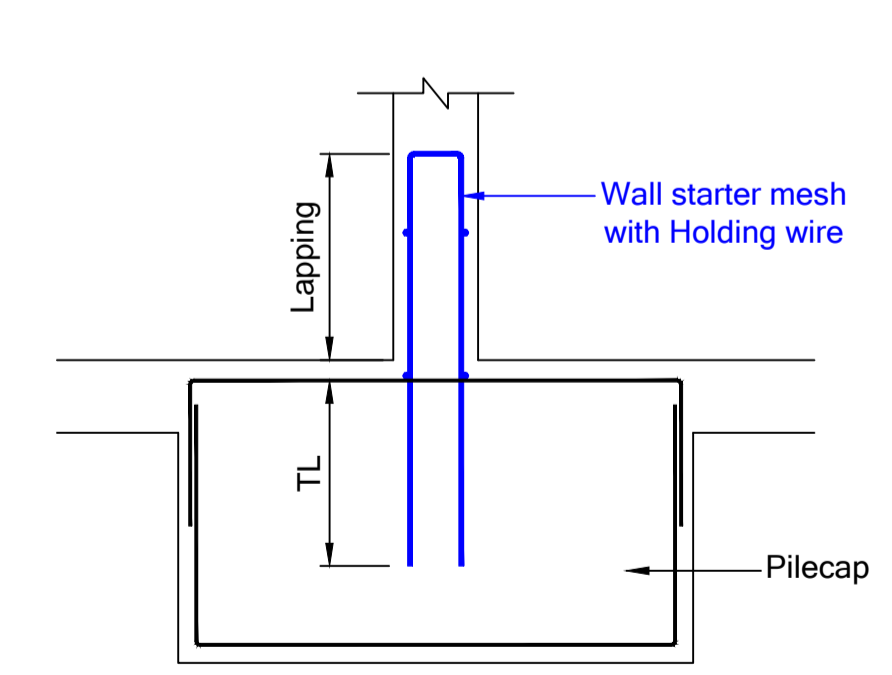
SECTION B-B



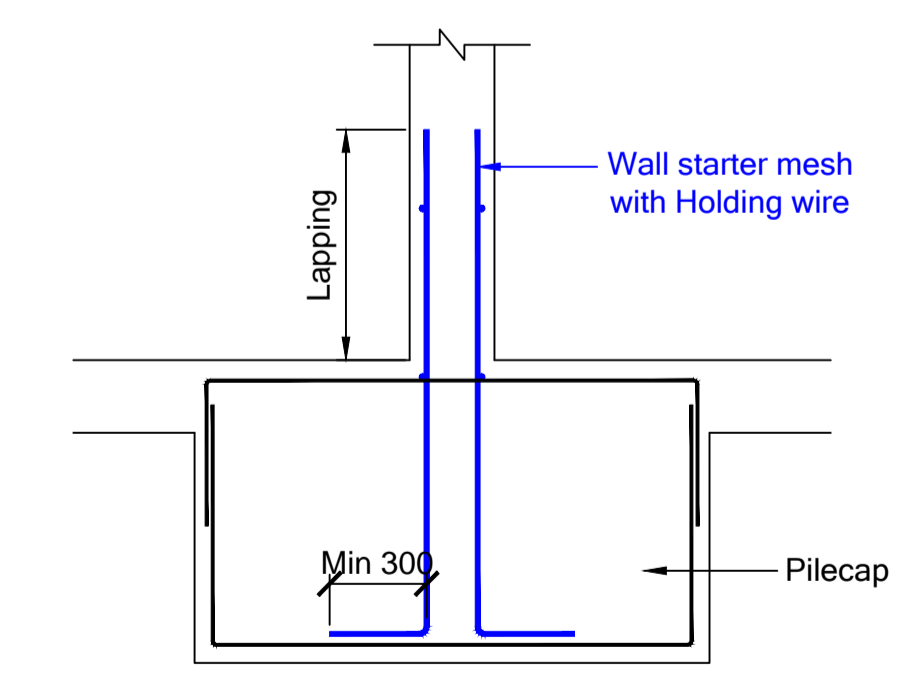
WALL STARTER (TYPE 1)



WALL STARTER (TYPE 2)



WALL STARTER (TYPE 3)



WALL STARTER (TYPE 4)



The Art of Reinforcing
BRC ASIA LIMITED

350 Jalan Boon Lay, Jurong Town, Singapore 619530
 Telephone : 62652333 ; Fax : 62664728 (Engrg) , 62652580 (Mktg)
 Website : www.brc.com.sg , email : sales@brc.com.sg

JOB TITLE :
 BRC PROPOSAL FOR PILECAP,
 COLUMN STUMP AND WALL STARTER

EXTRACTED FROM DRAWING NO :	
DRAWING NO :	REV :
DATE :	DRAWN BY :
SCALE :	CHECKED BY :
FILE :	