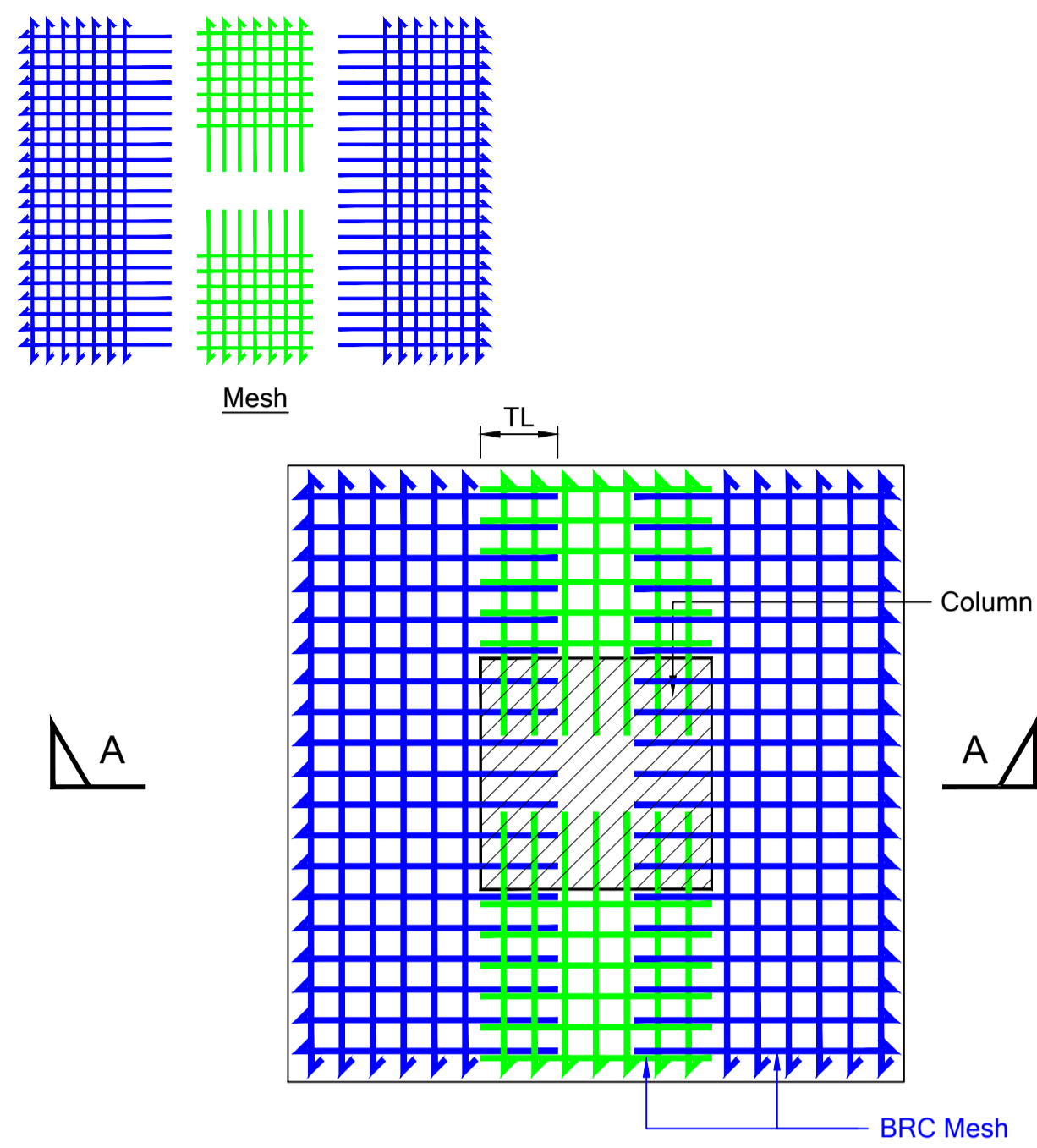
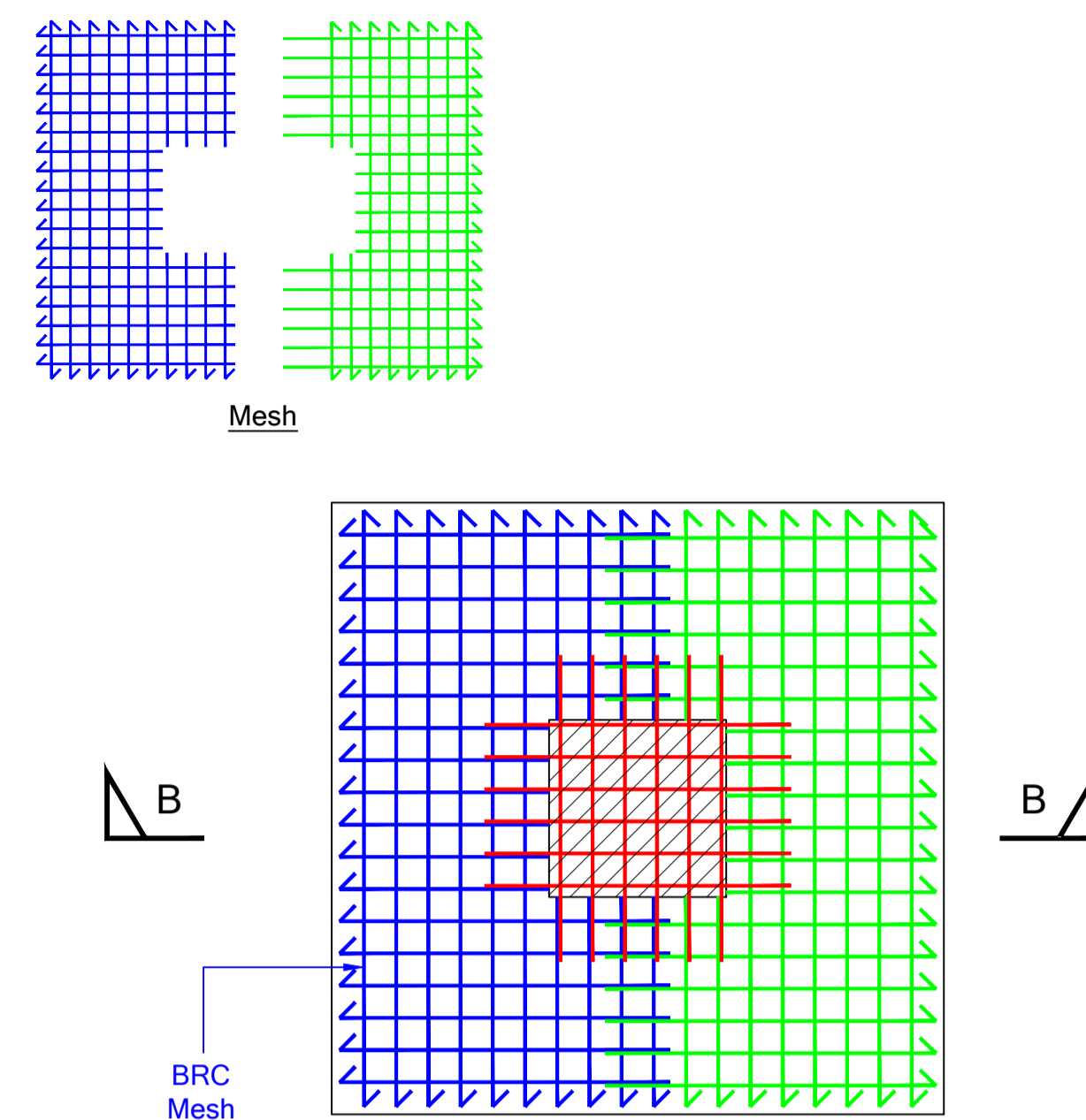


TYPE 1



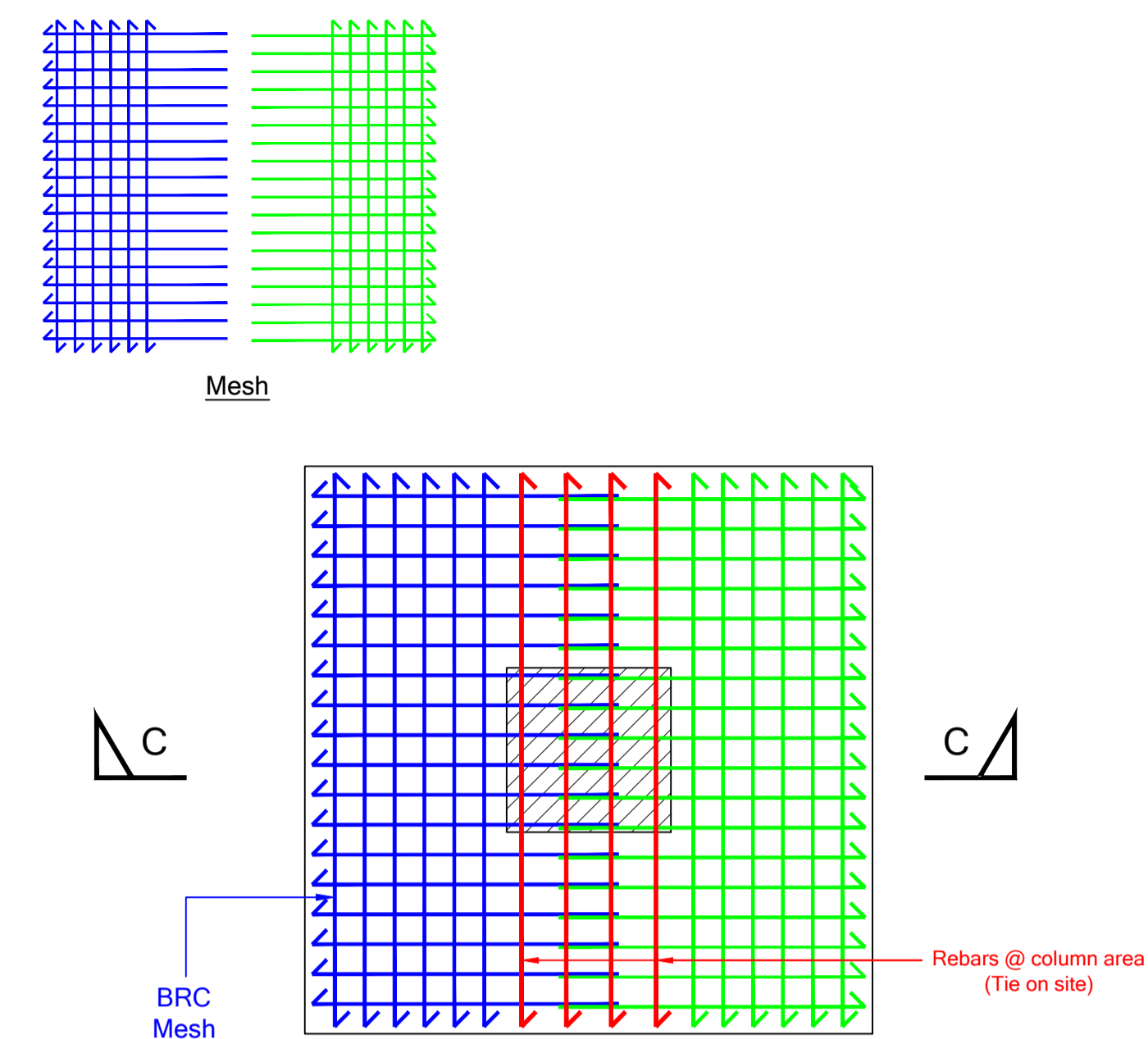
DROP PANEL BOTTOM REINFT. DETAILS

TYPE 2

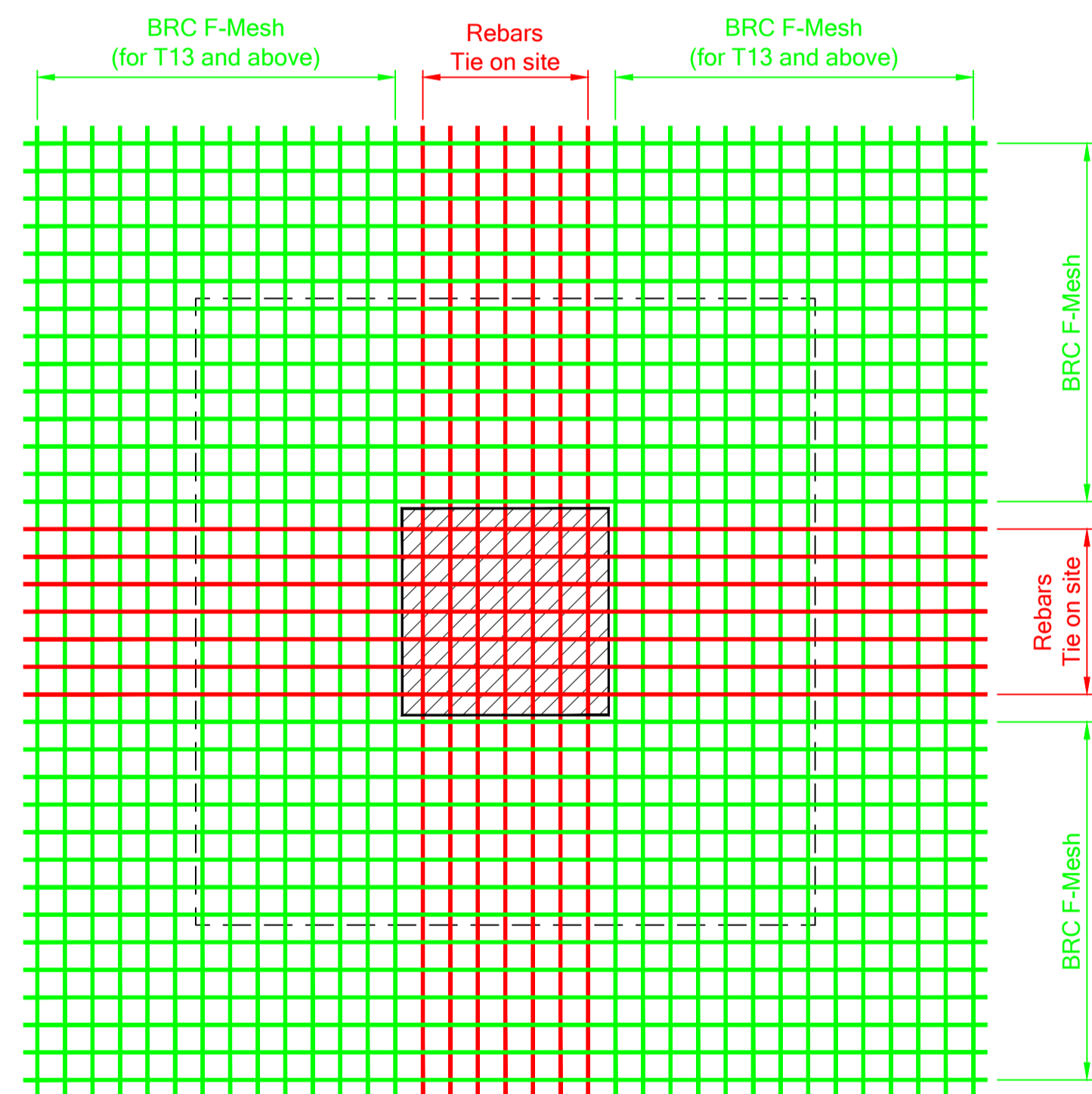


DROP PANEL BOTTOM REINFT. DETAILS

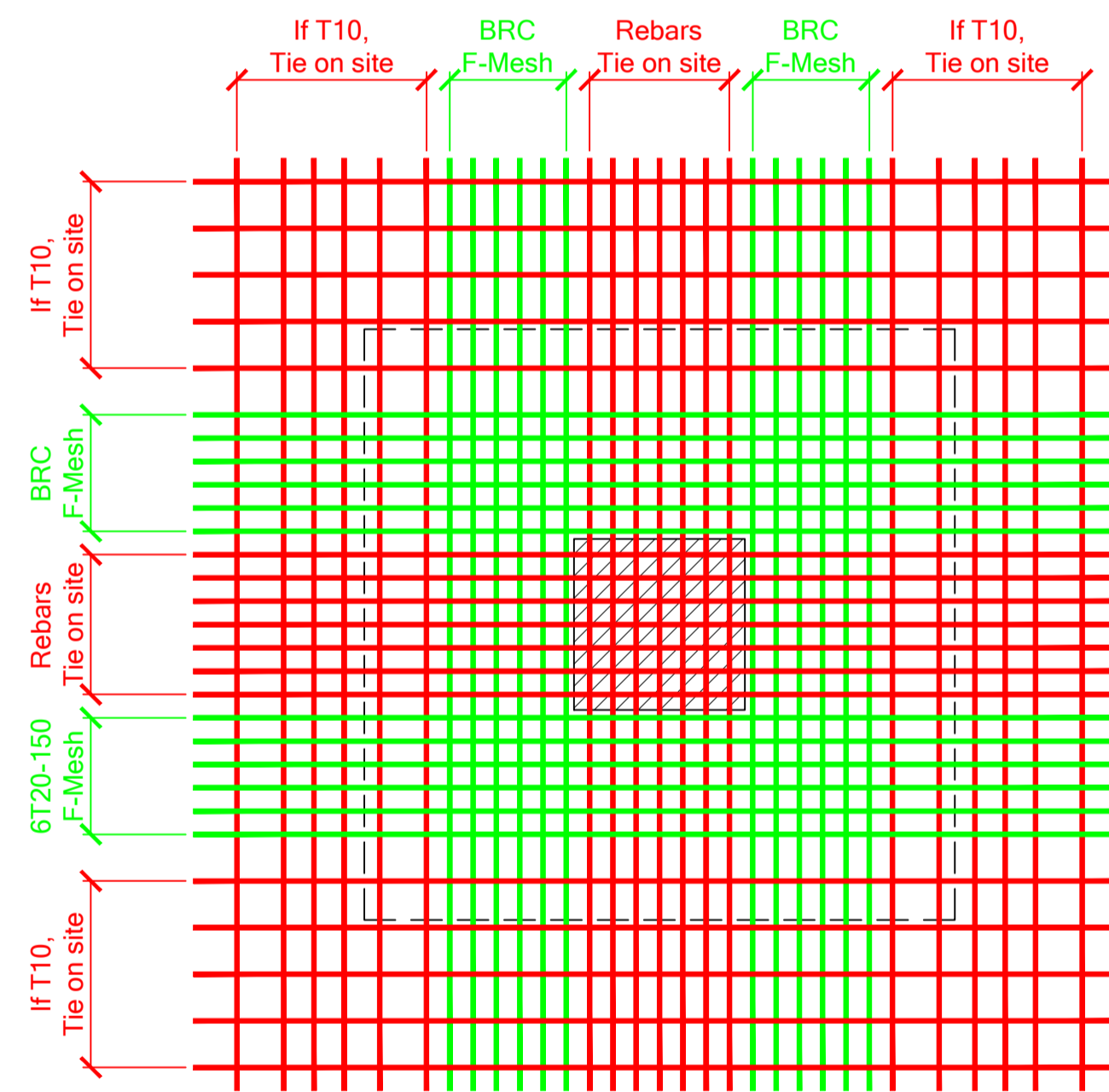
TYPE 3



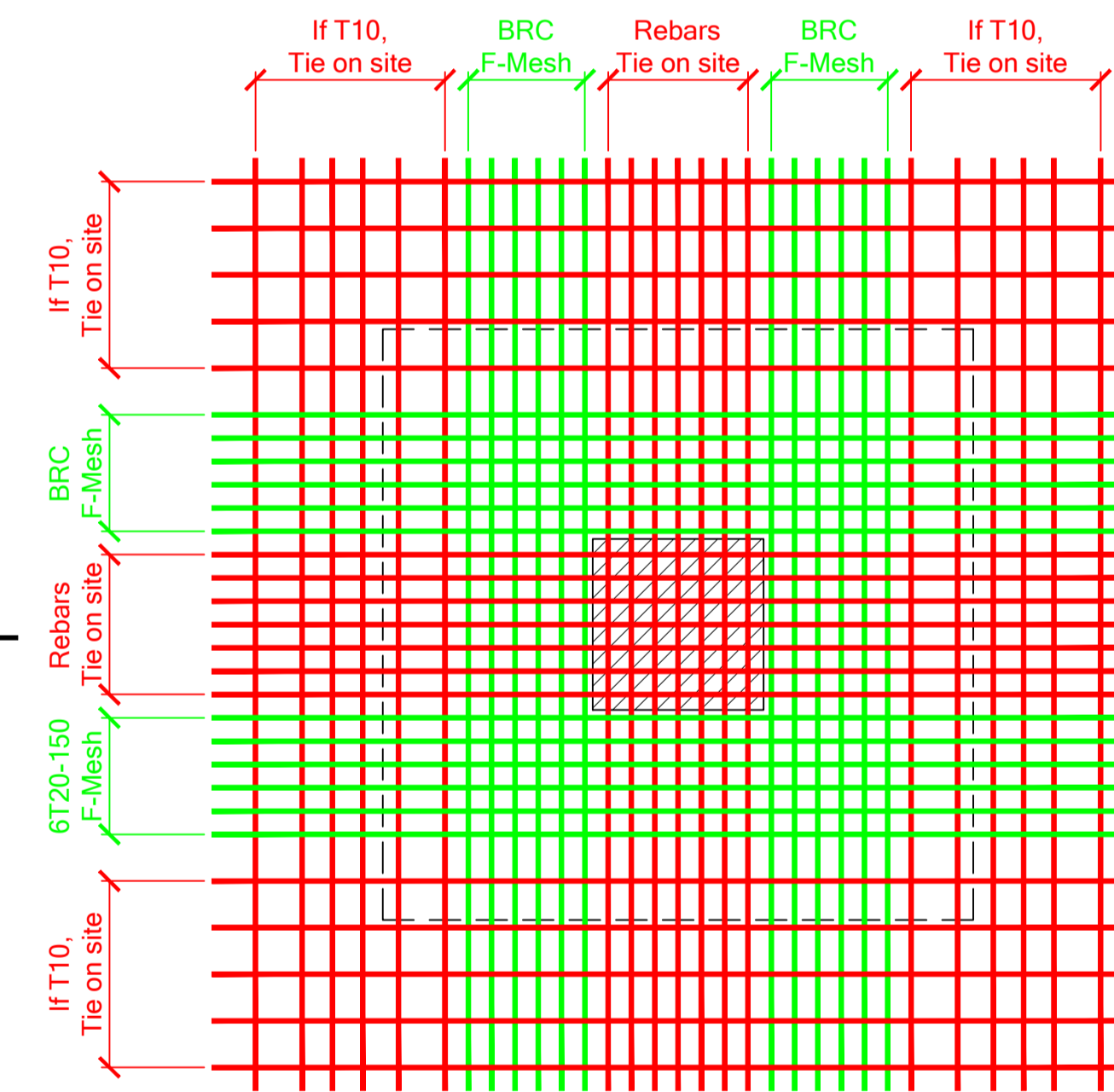
DROP PANEL BOTTOM REINFT. DETAILS



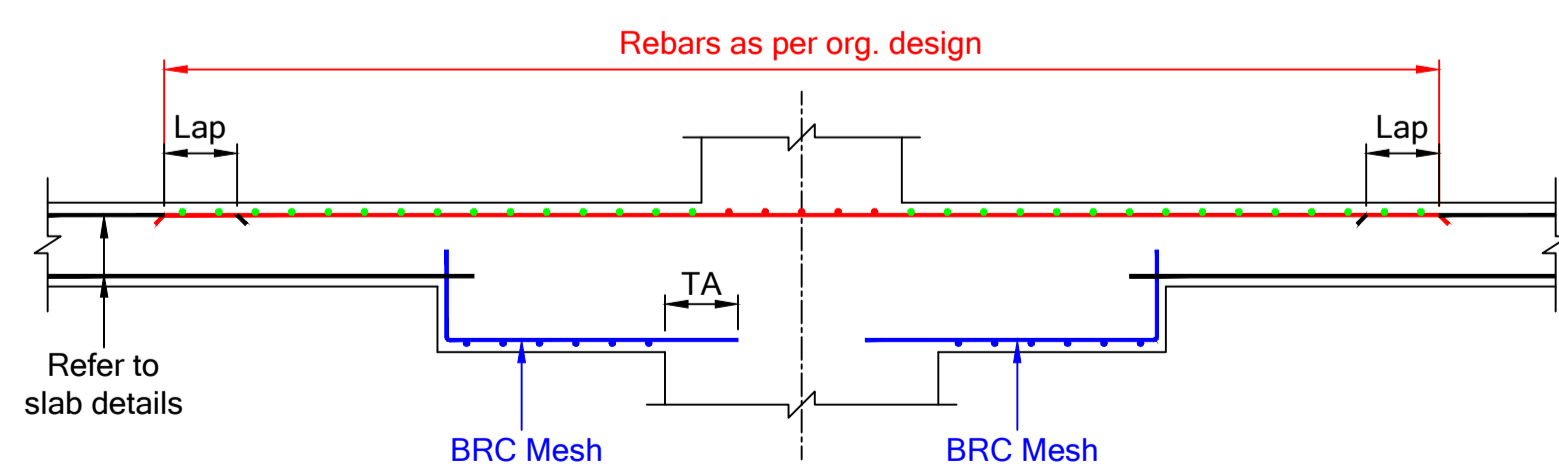
DROP PANEL TOP REINFT. DETAILS



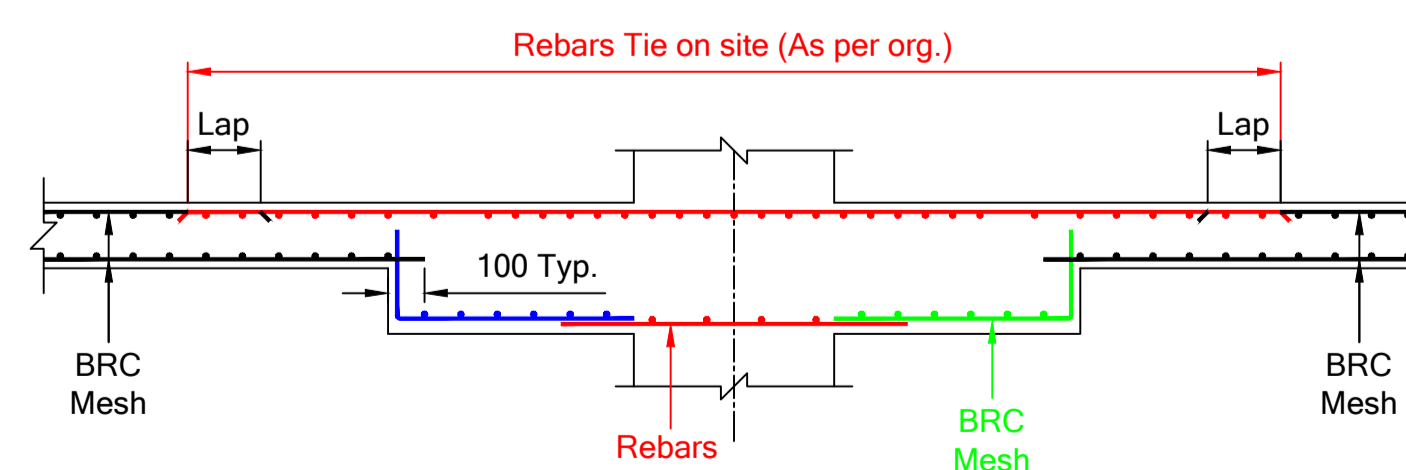
DROP PANEL TOP REINFT. DETAILS



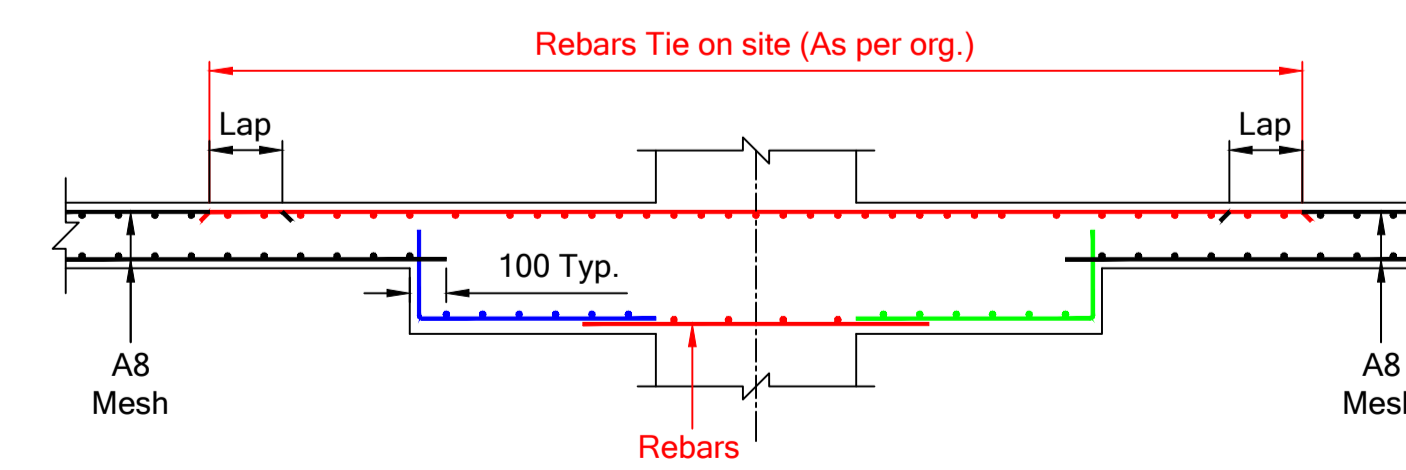
DROP PANEL TOP REINFT. DETAILS



SECTION A-A



SECTION B-B



SECTION C-C

NOTES:
 SUBJECT TO MANUFACTURING AND TRANSPORTATION CONSTRAN.
 Disclaimer: These drawings and detailing are for reference only and BRC is not liable for any consequences from the use of these drawings and detailing.

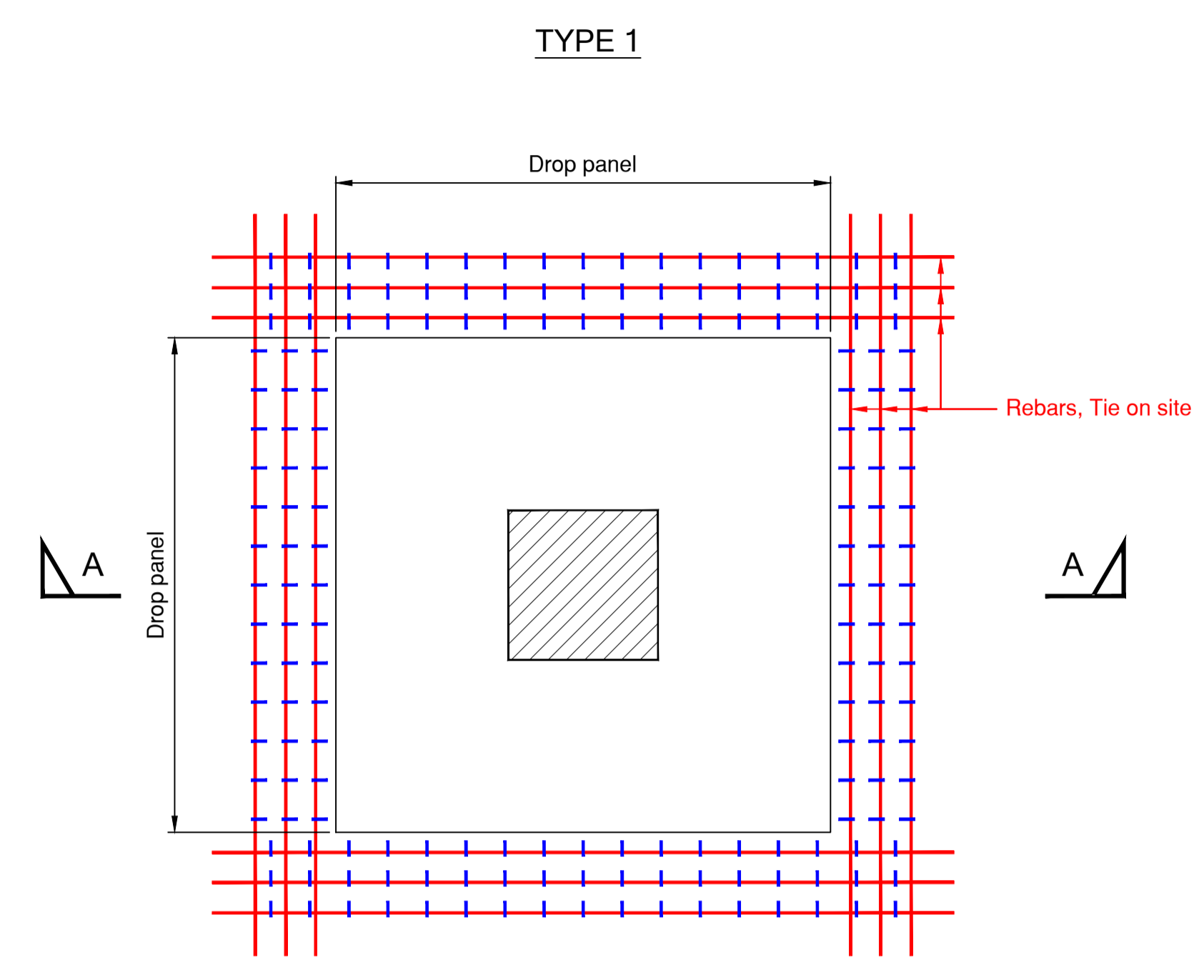
BRC Prefab
 The Art of Reinforcing
 BRC ASIA LIMITED

350 Jalan Boon Lay, Jurong Town, Singapore 619530
 Telephone : 62652333 ; Fax : 62664728 (Engrg) ; 62652580 (Mktg)
 Website : www.brc.com.sg , email : sales@brc.com.sg

JOB TITLE :
 BRC PROPOSAL FOR DROP PANEL

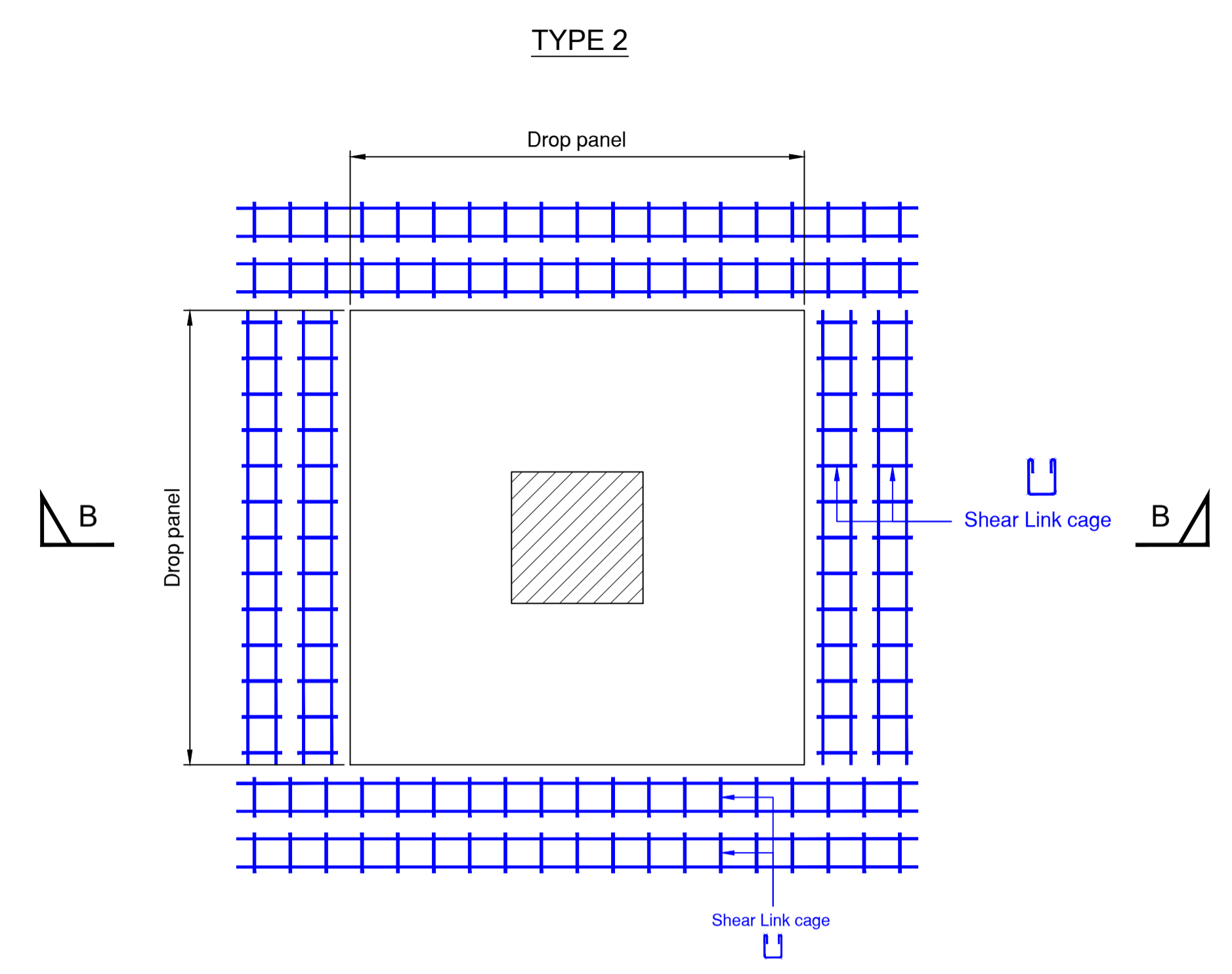
EXTRACTED FROM DRAWING NO :	
DRAWING NO :	REV :
DATE :	DRAWN BY :
SCALE :	CHECKED BY :
FILE :	

NOTES:
 SUBJECT TO MANUFACTURING AND TRANSPORTATION CONSTRAN.
 Disclaimer: These drawings and detailing are for reference only and BRC is not liable for any consequences from the use of these drawings and detailing.



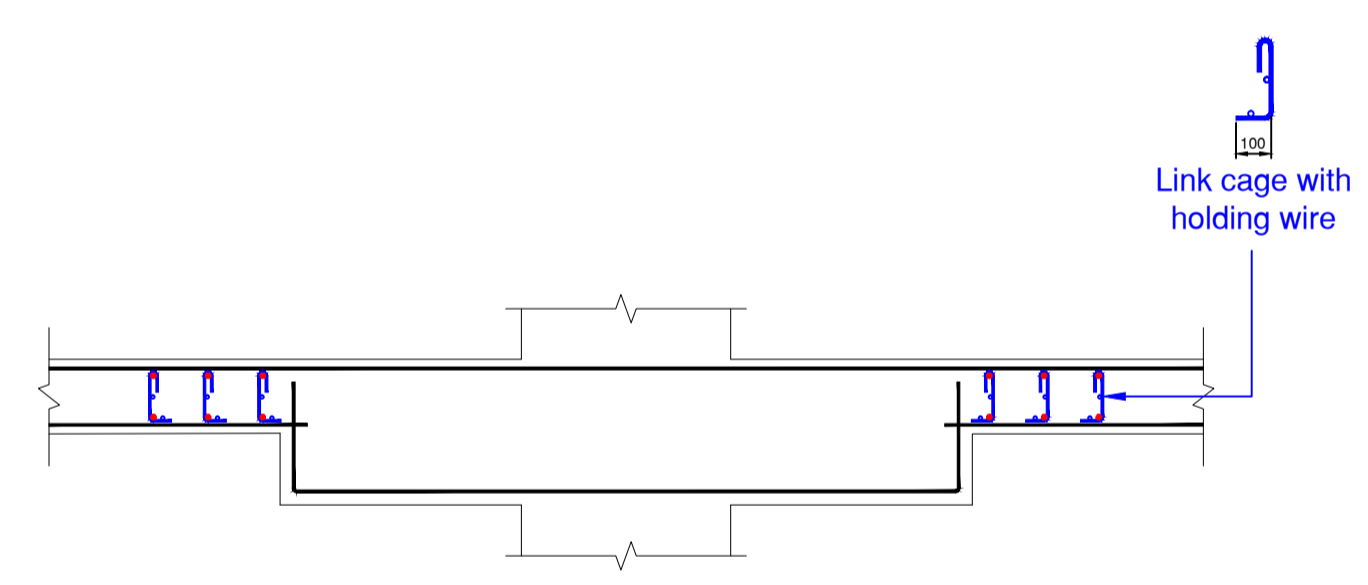
DROP PANEL SHEAR LINK DETAILS

Note:
 Rebars, Tie on site

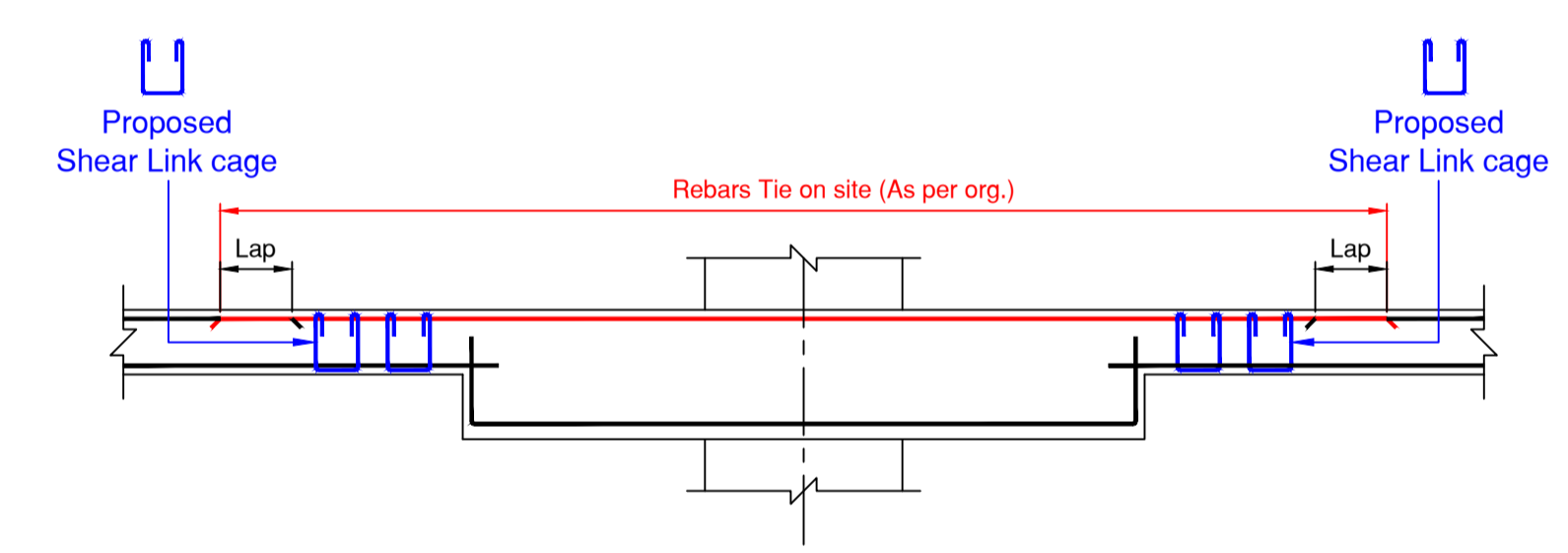


DROP PANEL SHEAR LINK DETAILS

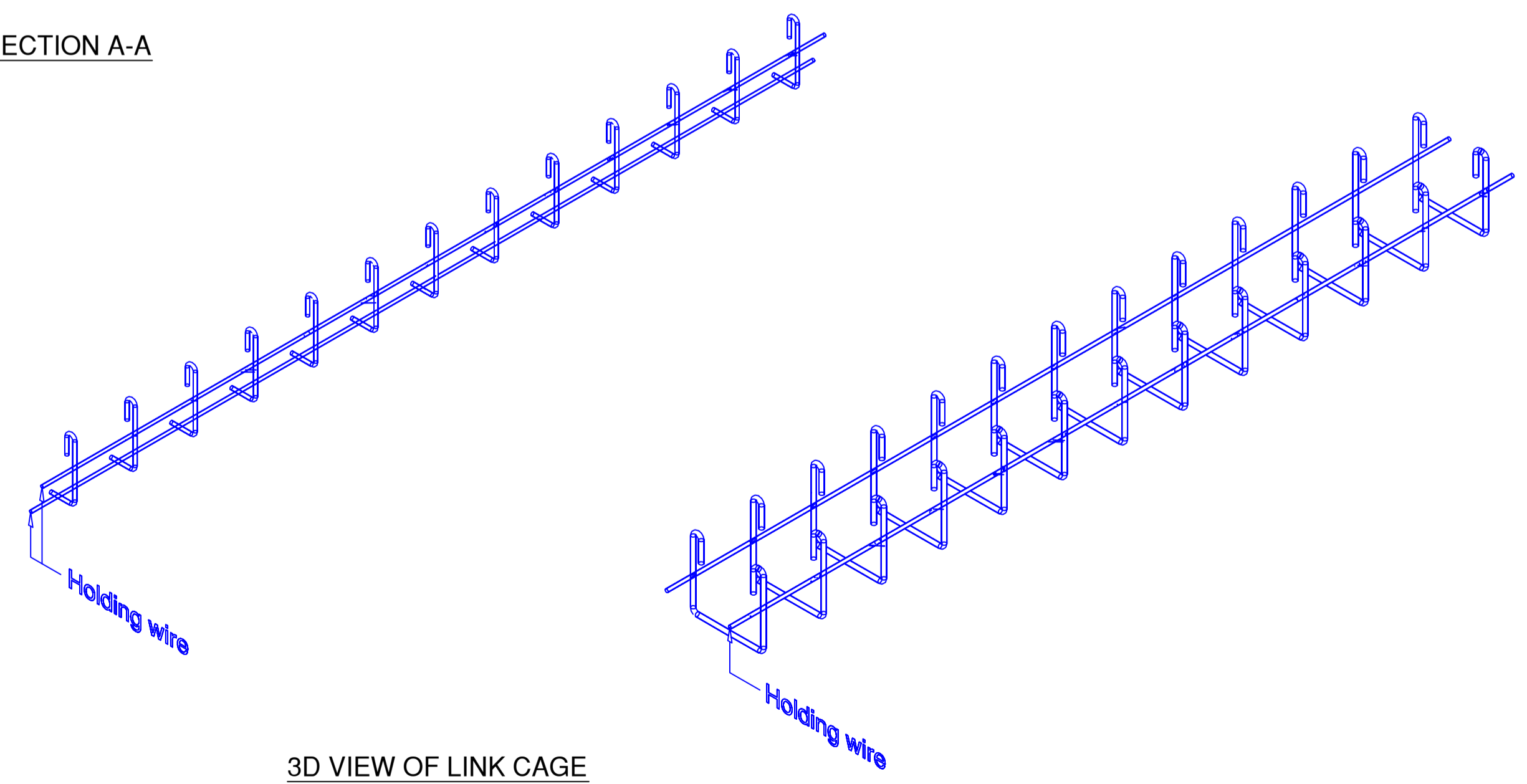
Note:
 Rebars, Tie on site



SECTION A-A



SECTION B-B



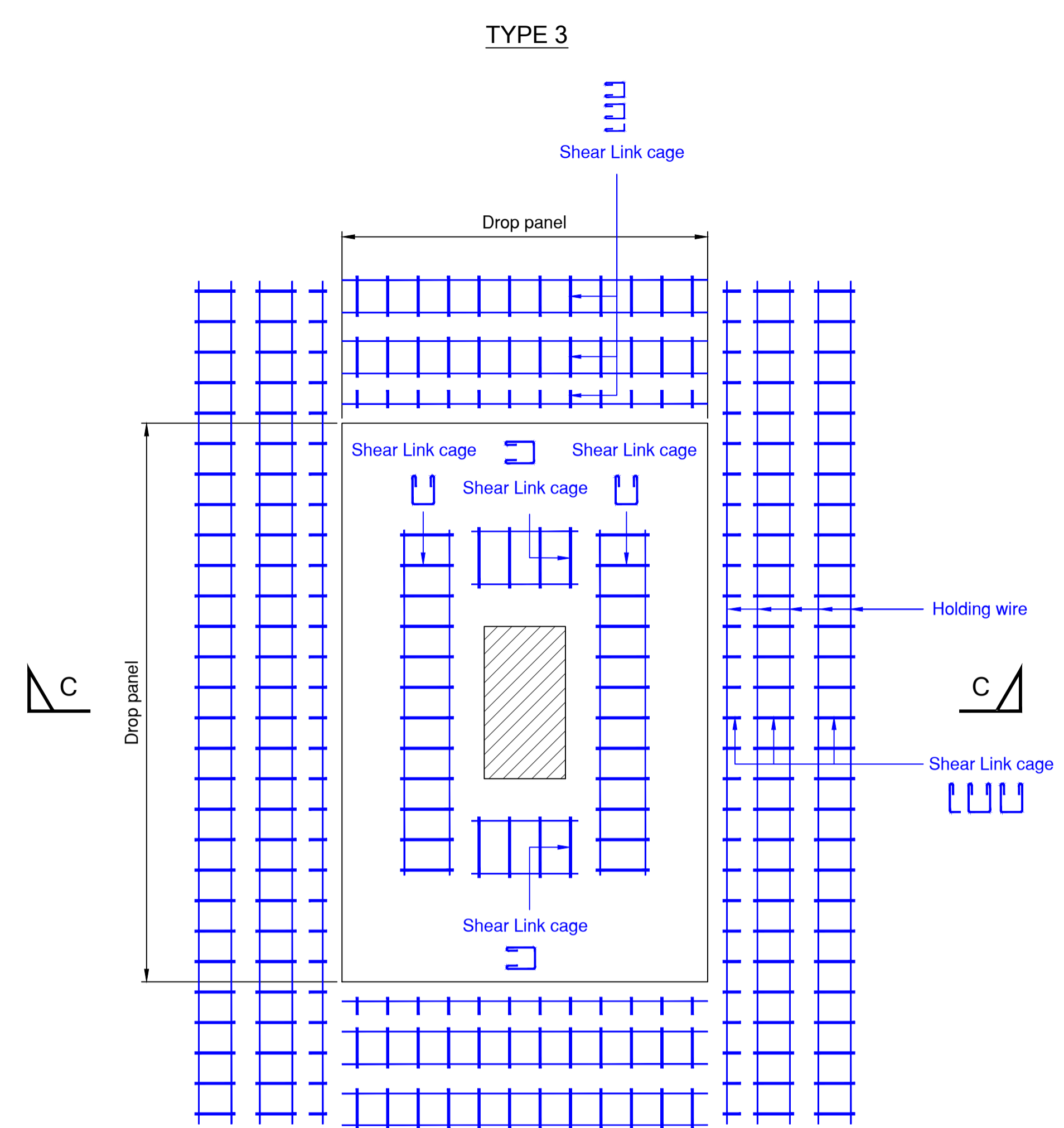
3D VIEW OF LINK CAGE

BRC Prefab
The Art of Reinforcing
BRC ASIA LIMITED
 350 Jalan Boon Lay, Jurong Town, Singapore 619530
 Telephone : 62652333 ; Fax : 62664728 (Engrg) , 62652580 (Mktg)
 Website : www.brc.com.sg , email : sales@brc.com.sg

JOB TITLE :
 BRC PROPOSAL FOR
 DROP PANEL SHEAR LINK 1 OF 2

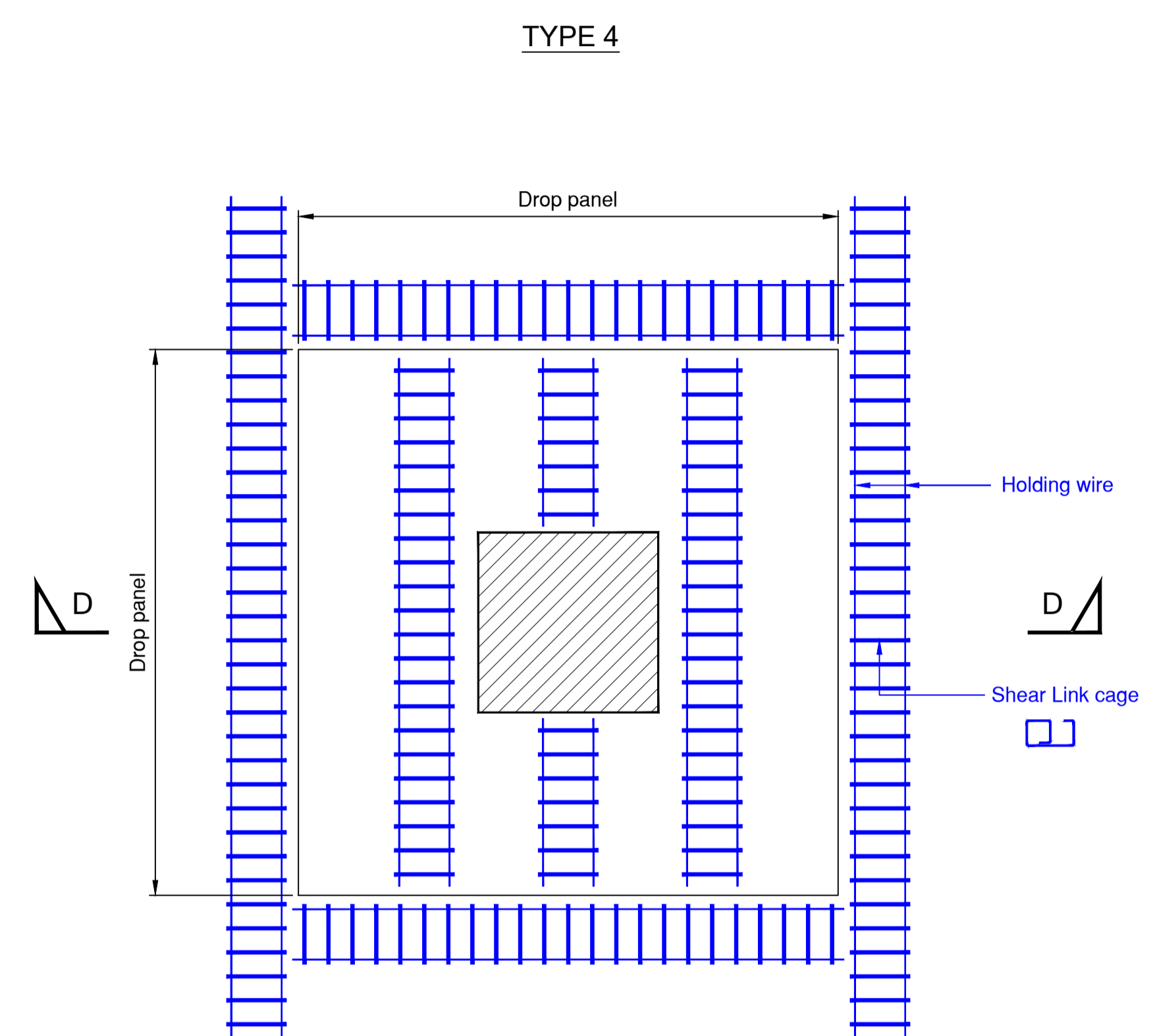
EXTRACTED FROM DRAWING NO :	
DRAWING NO :	REV :
DATE :	DRAWN BY :
SCALE :	CHECKED BY :
FILE :	

NOTES:
 SUBJECT TO MANUFACTURING AND TRANSPORTATION CONSTRAN.
 Disclaimer: These drawings and detailing are for reference only and BRC is not liable for any consequences from the use of these drawings and detailing.



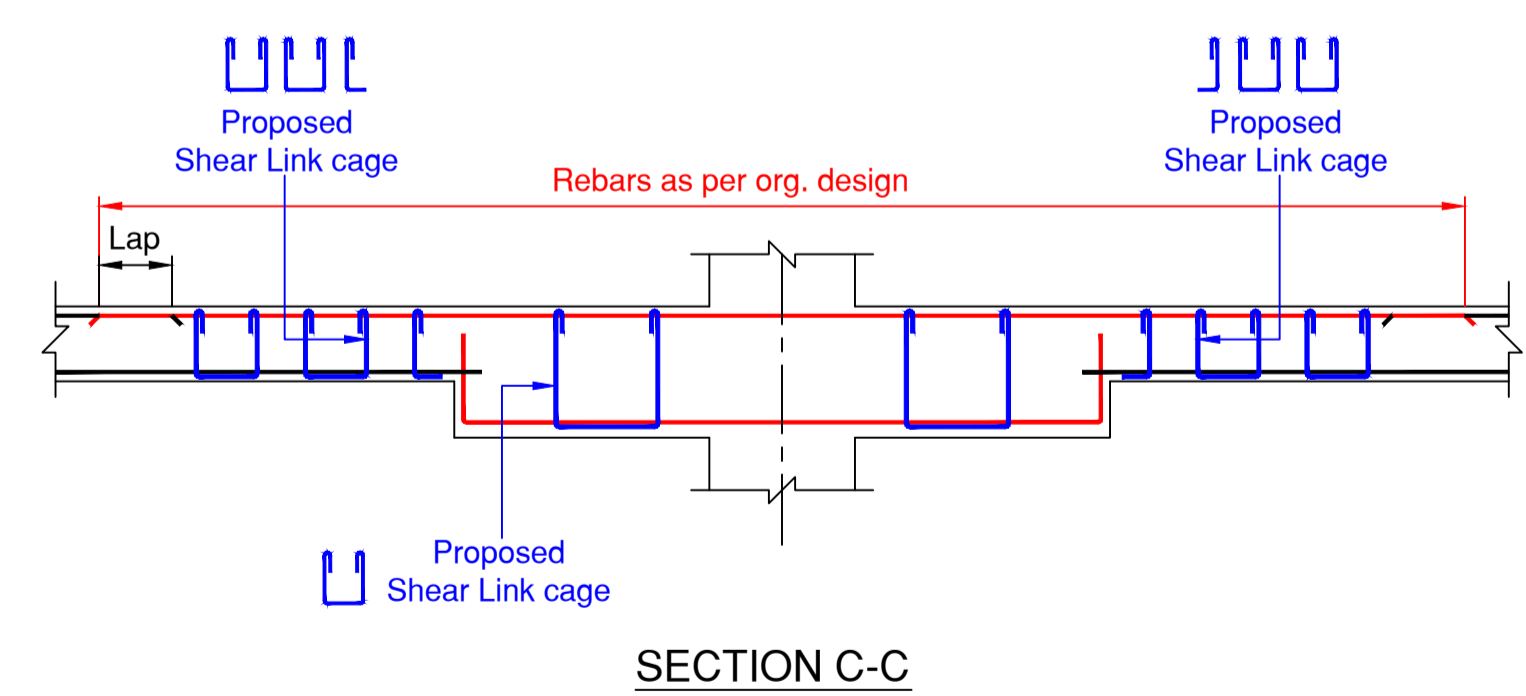
DROP PANEL SHEAR LINK DETAILS

Note:
 Rebars, Tie on site

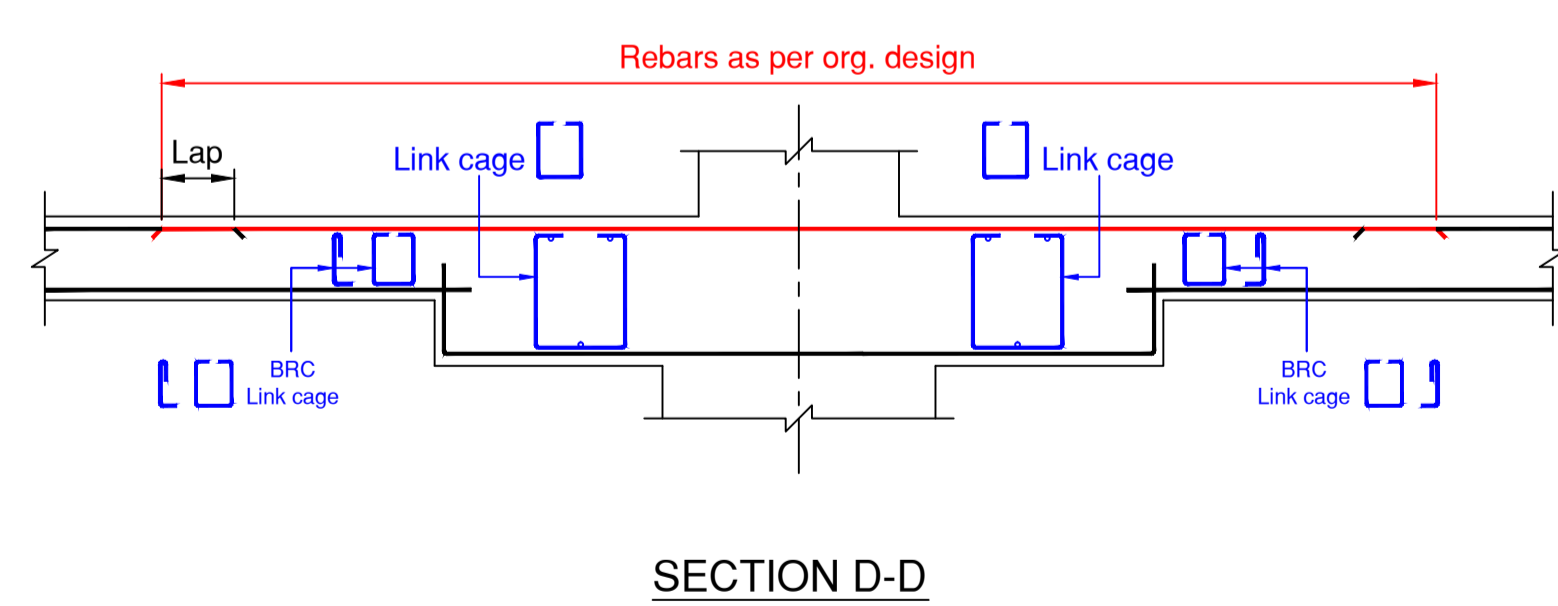


DROP PANEL SHEAR LINK DETAILS

Note:
 Rebars, Tie on site



SECTION C-C



SECTION D-D

BRC Prefab
The Art of Reinforcing
BRC ASIA LIMITED
 350 Jalan Boon Lay, Jurong Town, Singapore 619530
 Telephone : 62652333 ; Fax : 62664728 (Engrg) , 62652580 (Mktg)
 Website : www.brc.com.sg , email : sales@brc.com.sg

JOB TITLE :
 BRC PROPOSAL FOR
 DROP PANEL SHEAR LINK 2 OF 2

EXTRACTED FROM DRAWING NO :	
DRAWING NO :	REV :
DATE :	DRAWN BY :
SCALE :	CHECKED BY :
FILE :	