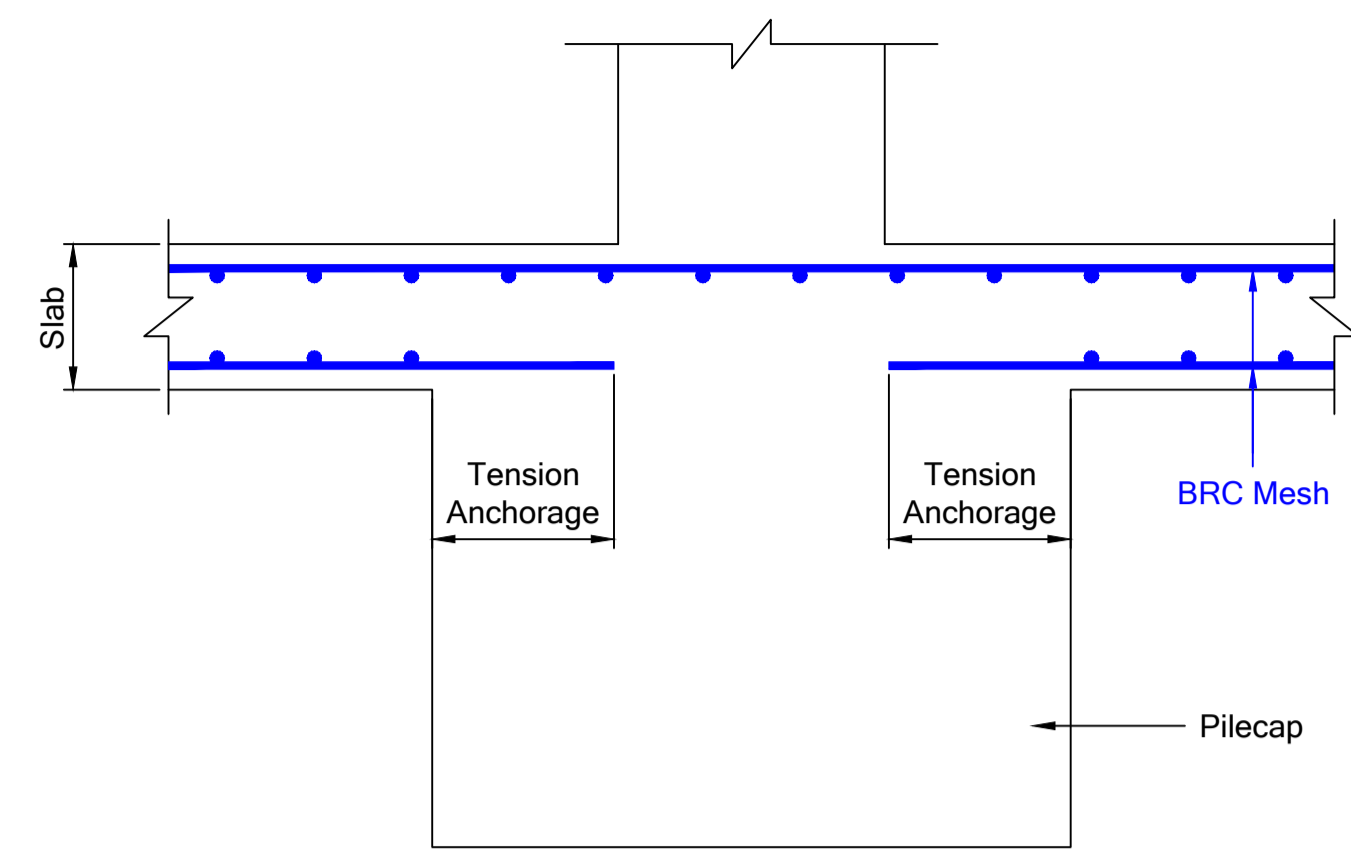
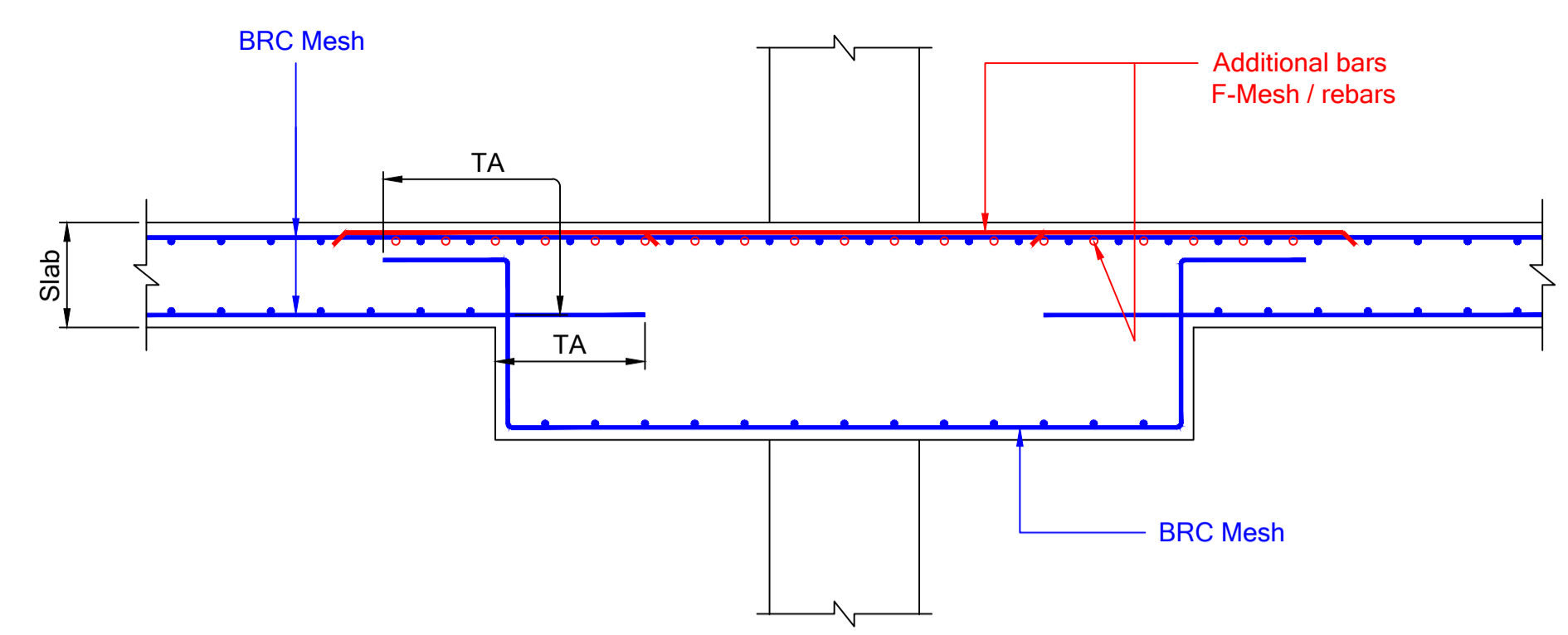


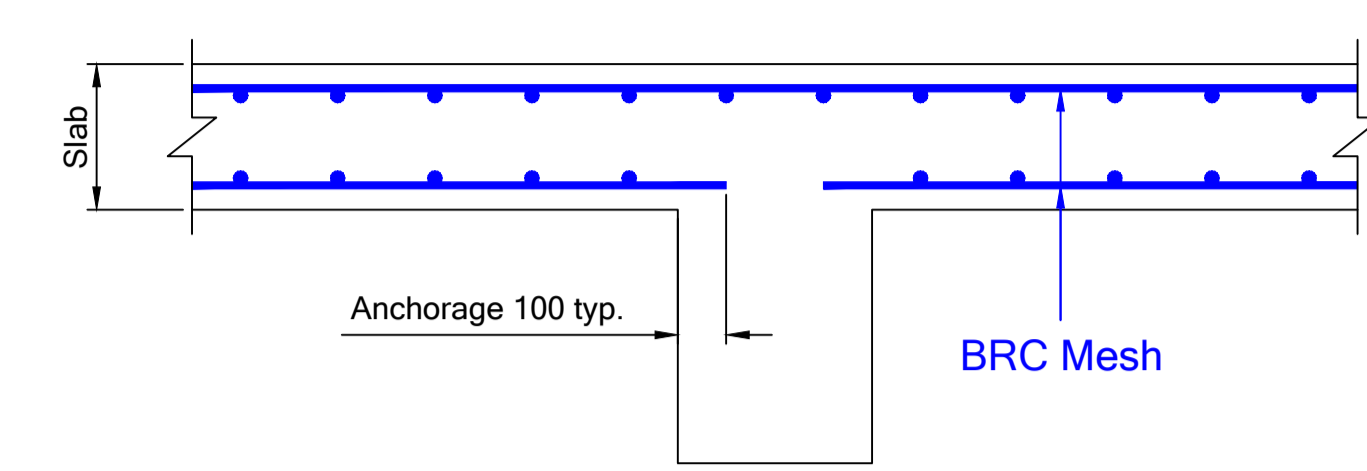
NOTES:
 SUBJECT TO MANUFACTURING AND TRANSPORTATION CONSTRAN.
 Disclaimer: These drawings and detailing are for reference only and BRC is not liable for any consequences from the use of these drawings and detailing.



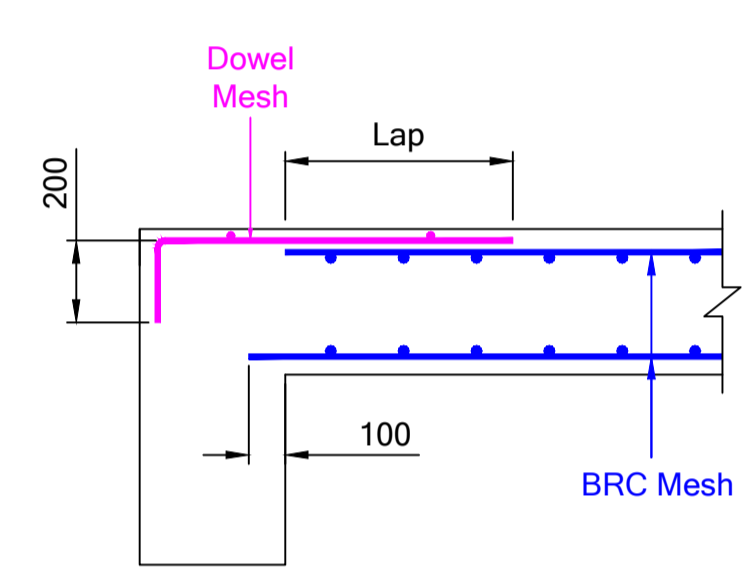
TYPICAL ANCHORAGE DETAILS AT PILECAP



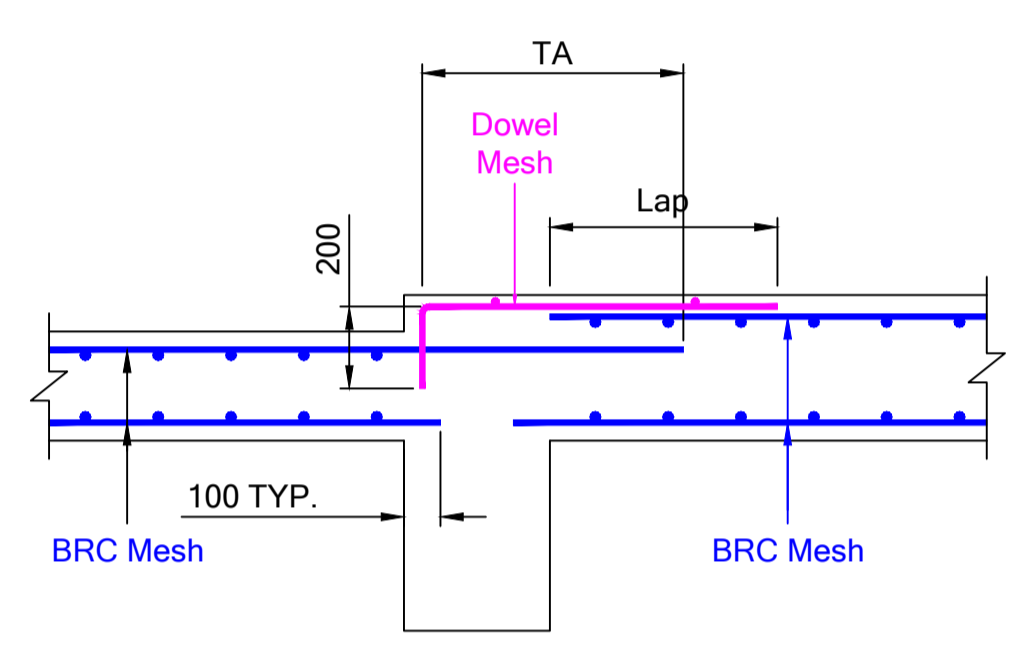
TYPICAL DETAILS AT DROP PANEL



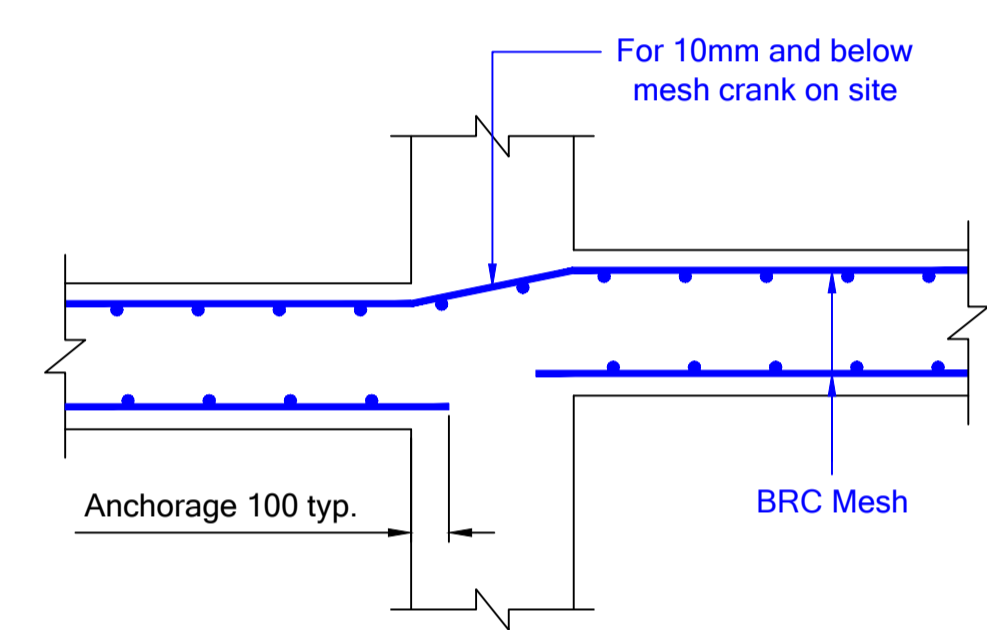
TYPICAL ANCHORAGE DETAILS



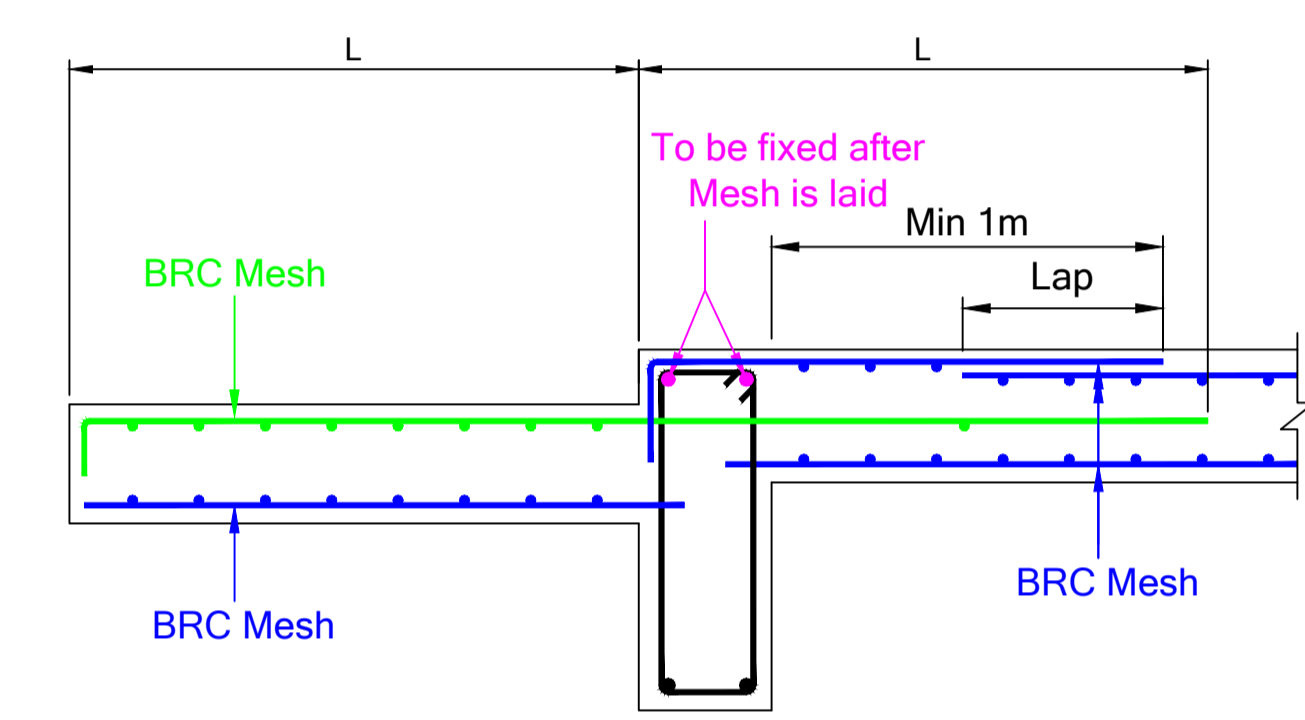
TYPICAL SLAB EDGE DETAILS



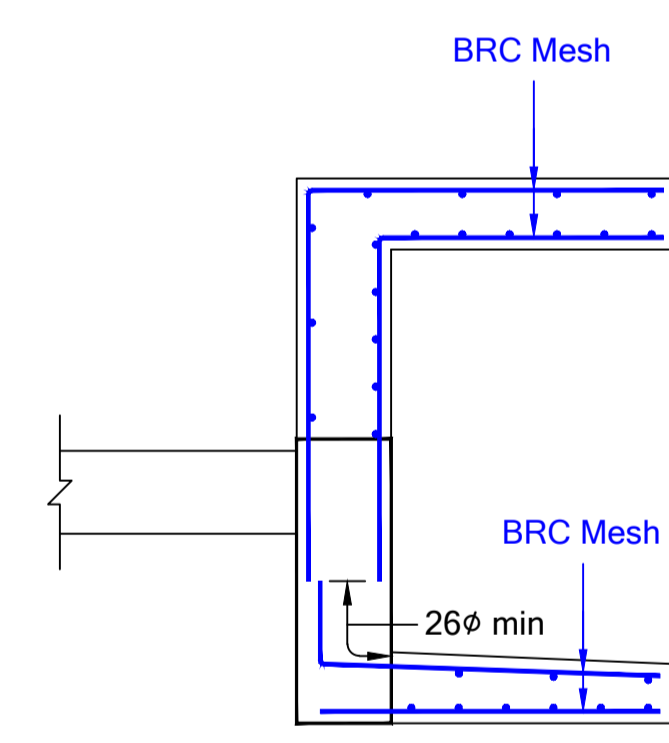
TYPICAL DROP DETAILS



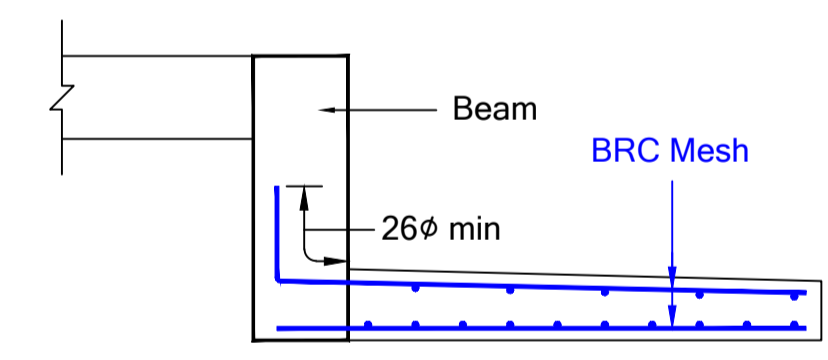
TYPICAL DROP DETAILS



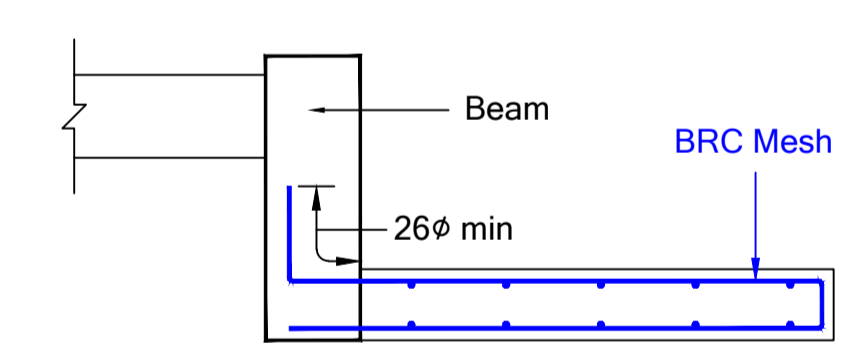
TYPICAL SECTION AT BALCONY



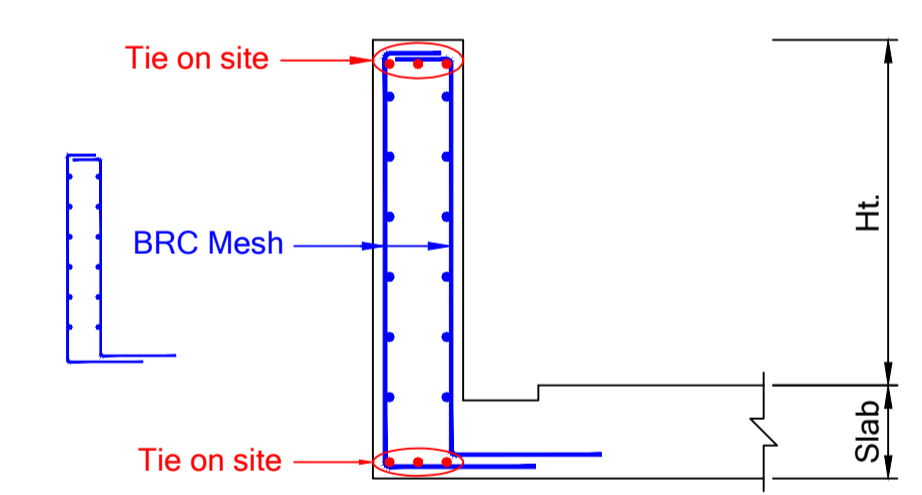
TYPICAL THRU BAY WINDOW (WITHOUT DOWNRUN BEAM)



TYPICAL THRU RC LEDGE (WITHOUT ALUMINUM SCREEN)



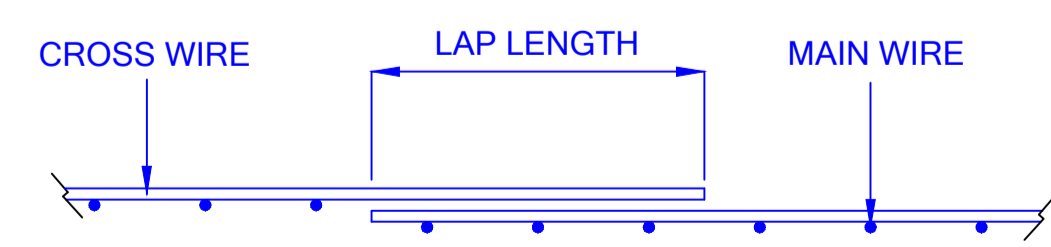
TYPICAL THRU RC LEDGE (WITH 1.5M HEIGHT ALUMINUM SCREEN OUTSIDE A/C LEDGE)



TYPICAL PARAPET WALL DETAILS

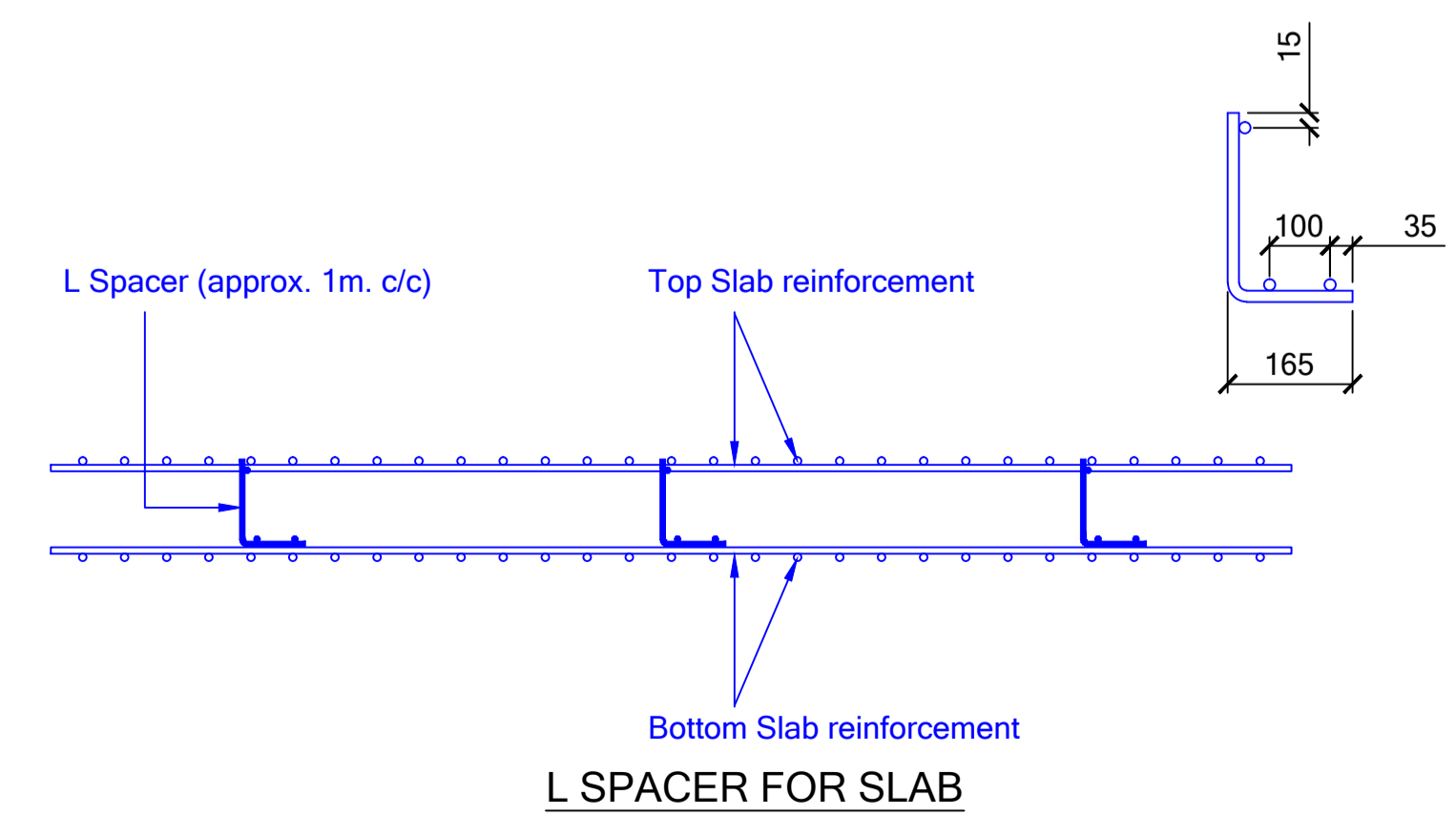
(UNLESS OTHERWISE INFORMED, THE FOLLOWING ASSUMPTIONS WILL BE ADOPTED)

- BOTTOM MESH ANCHORAGE LENGTH INTO BEAM :
 - FOR 1 - WAY SLAB : ALONG MAIN SPAN = 100 mm
ALONG SECONDARY DIRECTION = 100 mm
 - FOR 2 - WAY SLAB : BOTHWAY = 100 mm
- TOP MESH LENGTH OF L - BEND ALONG EDGE BEAM :
FOR 1st STOREY WITH SLAB THICKNESS $t \leq 200$ = 100 mm
FOR TYPICAL STOREY = 200 mm .
- * DENOTES LENGTH OF TOP MESH TO FOLLOW CONSULTANT'S DETAILS.



TYPICAL SIDE LONG OVERHANG LAP FOR CROSS DIRECTION

TYPICAL LAP DETAILS FOR SLAB

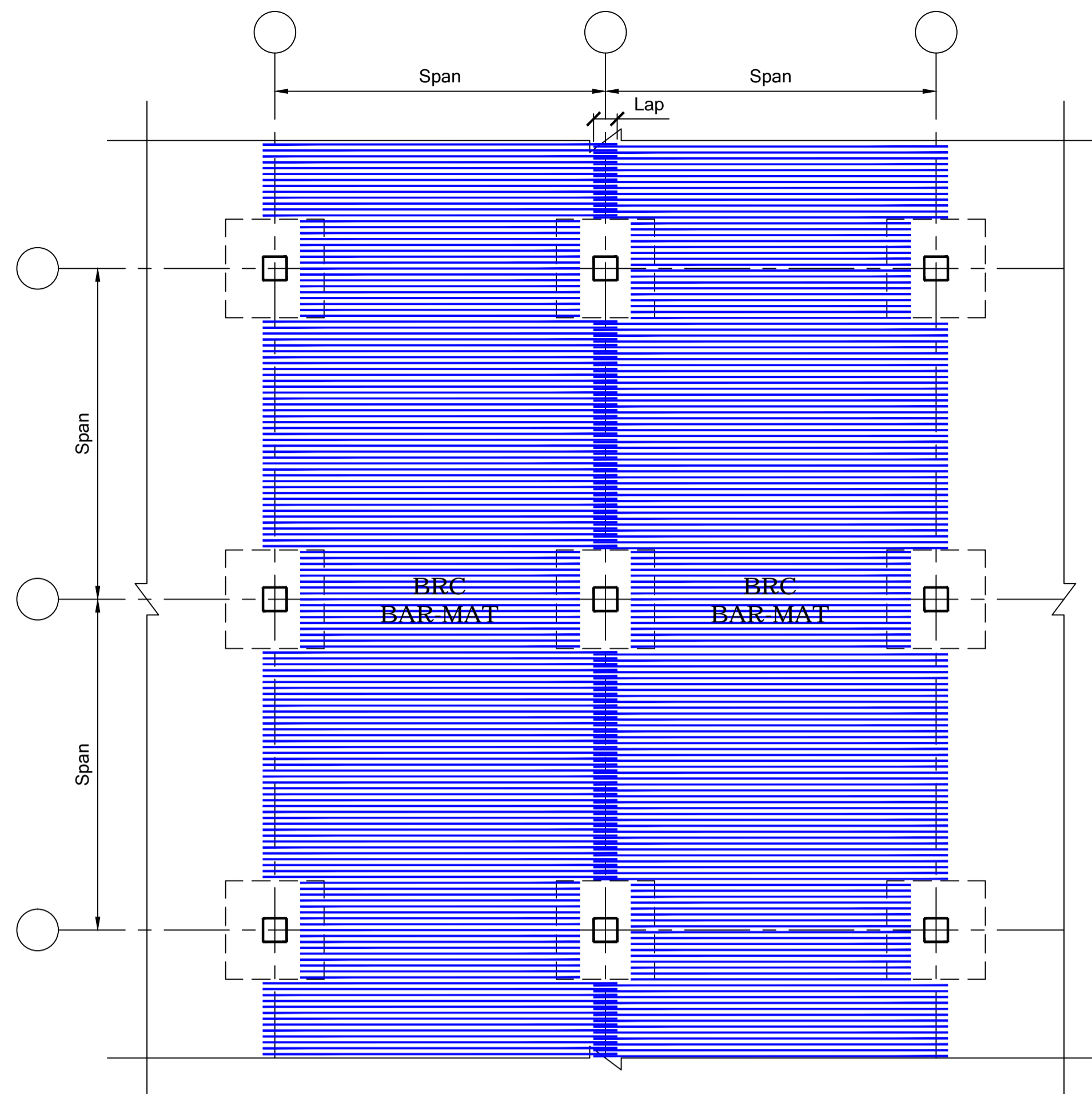


L SPACER FOR SLAB

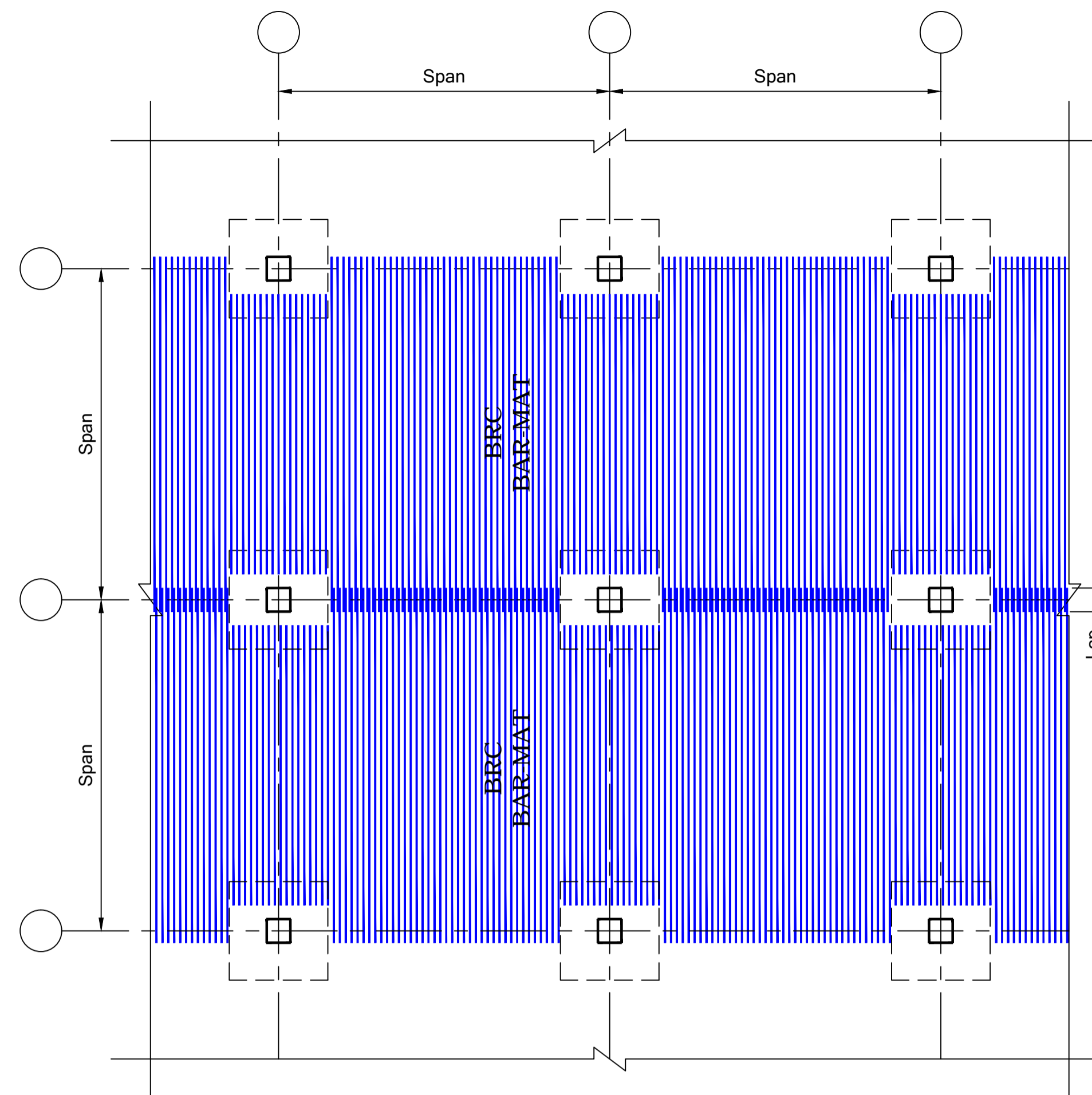
BRC Prefab
The Art of Reinforcing
BRC ASIA LIMITED
 350 Jalan Boon Lay , Jurong Town , Singapore 619530
 Telephone : 62652333 ; Fax : 62664728 (Engrg) , 62652580 (Mktg)
 Website : www.brc.com.sg , email : sales@brc.com.sg

JOB TITLE :
 BRC PROPOSAL FOR SLAB

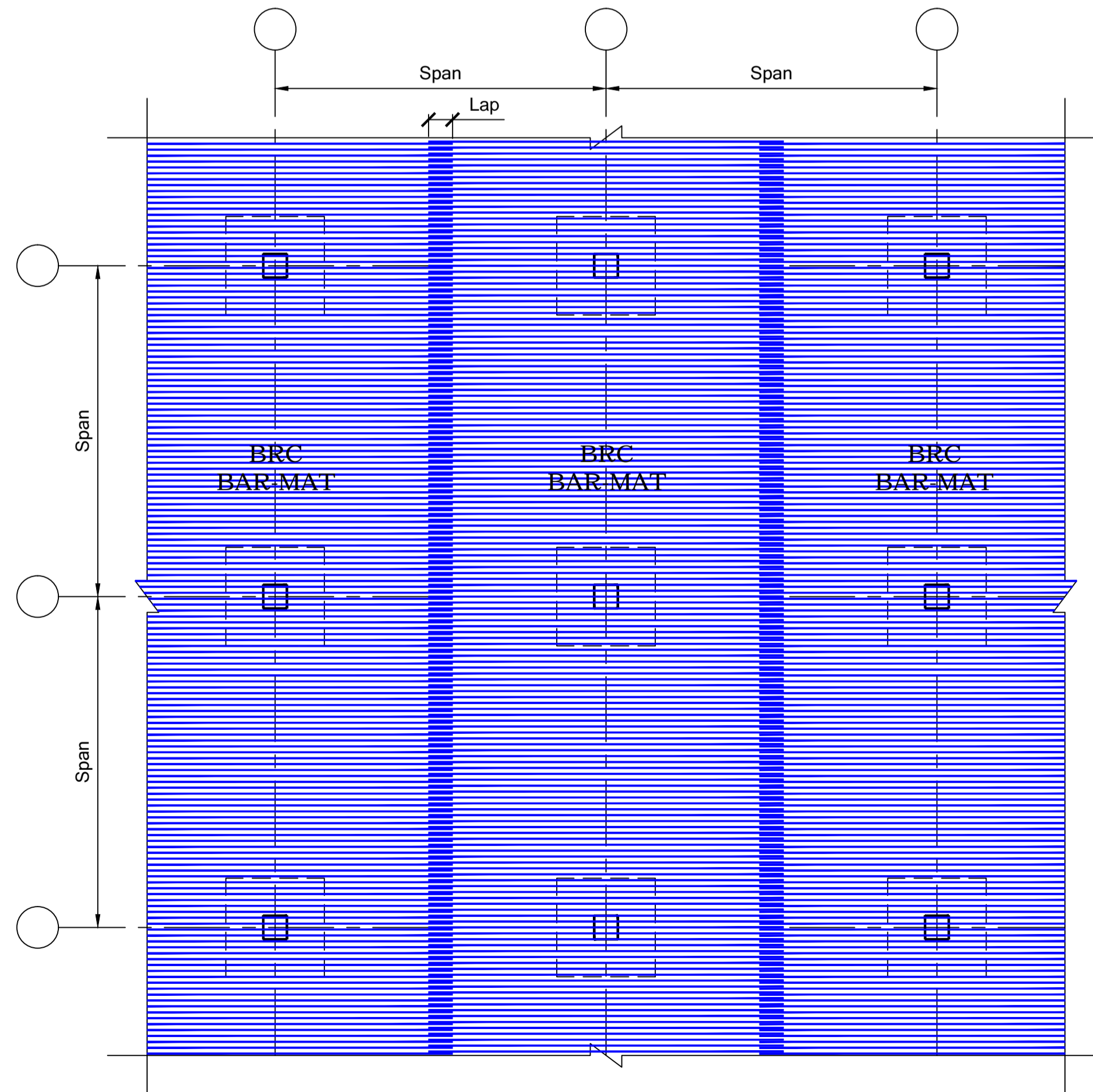
EXTRACTED FROM DRAWING NO :	REV :
DRAWING NO :	DRAWN BY :
DATE :	CHECKED BY :
SCALE :	FILE :



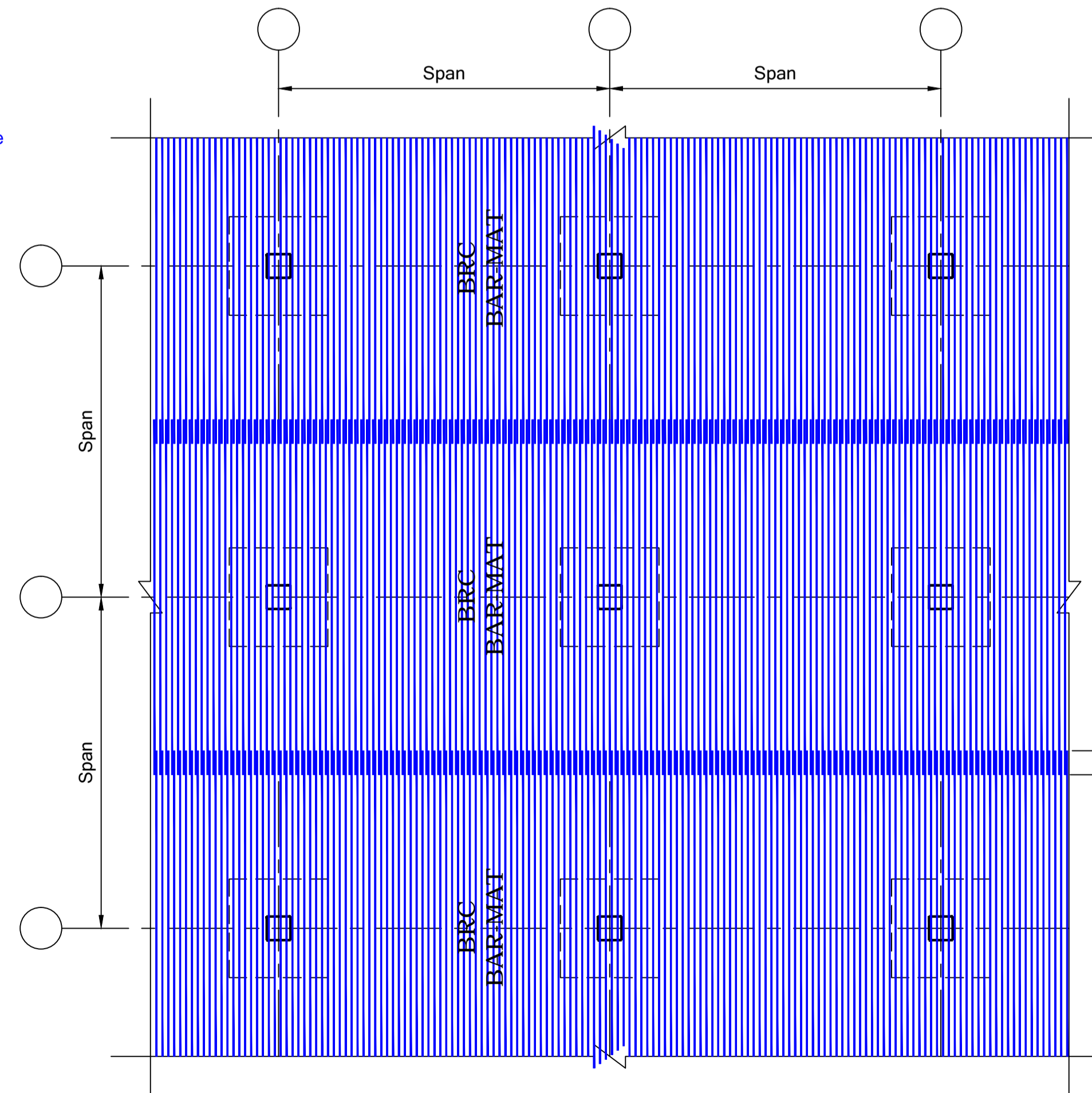
Bottom horizontal slab
 Note:
 Reinf., Anchorage and lapping as specified



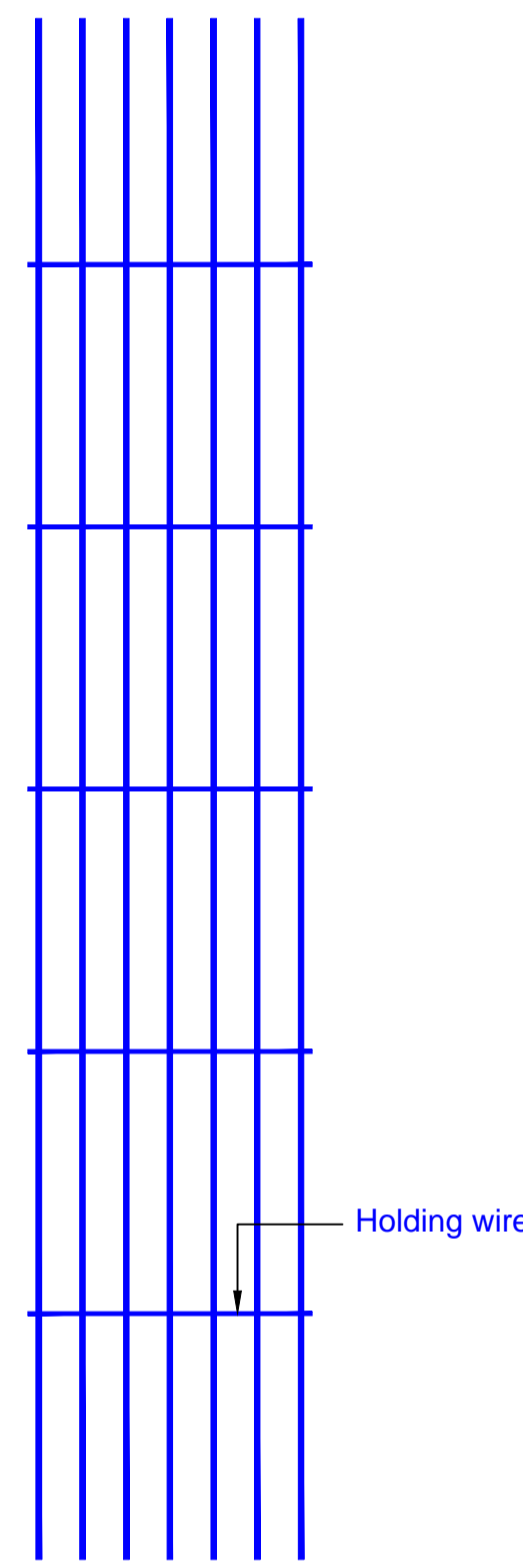
Bottom vertical slab
 Note:
 Reinf., Anchorage and lapping as specified



Top horizontal slab
 Note:
 Reinf., Anchorage and lapping as specified



Top vertical slab
 Note:
 Reinf., Anchorage and lapping as specified



Typical BAR-MAT details

NOTES:
 SUBJECT TO MANUFACTURING AND TRANSPORTATION CONSTRAN.
 Disclaimer: These drawings and detailing are for reference only and BRC is not liable for any consequences from the use of these drawings and detailing.

BRCPrefab
 The Art of Reinforcing

BRC ASIA LIMITED
 350 Jalan Boon Lay, Jurong Town, Singapore 619530
 Telephone : 62652333 ; Fax : 62664728 (Engrs) ; 62652580 (Mktg)
 Website : www.brc.com.sg , email : sales@brc.com.sg

JOB TITLE :
 BRC PROPOSAL FOR HEAVY SLAB (BAR-MAT)

EXTRACTED FROM DRAWING NO :	
DRAWING NO :	REV :
DATE :	DRAWN BY :
SCALE :	CHECKED BY :
FILE :	