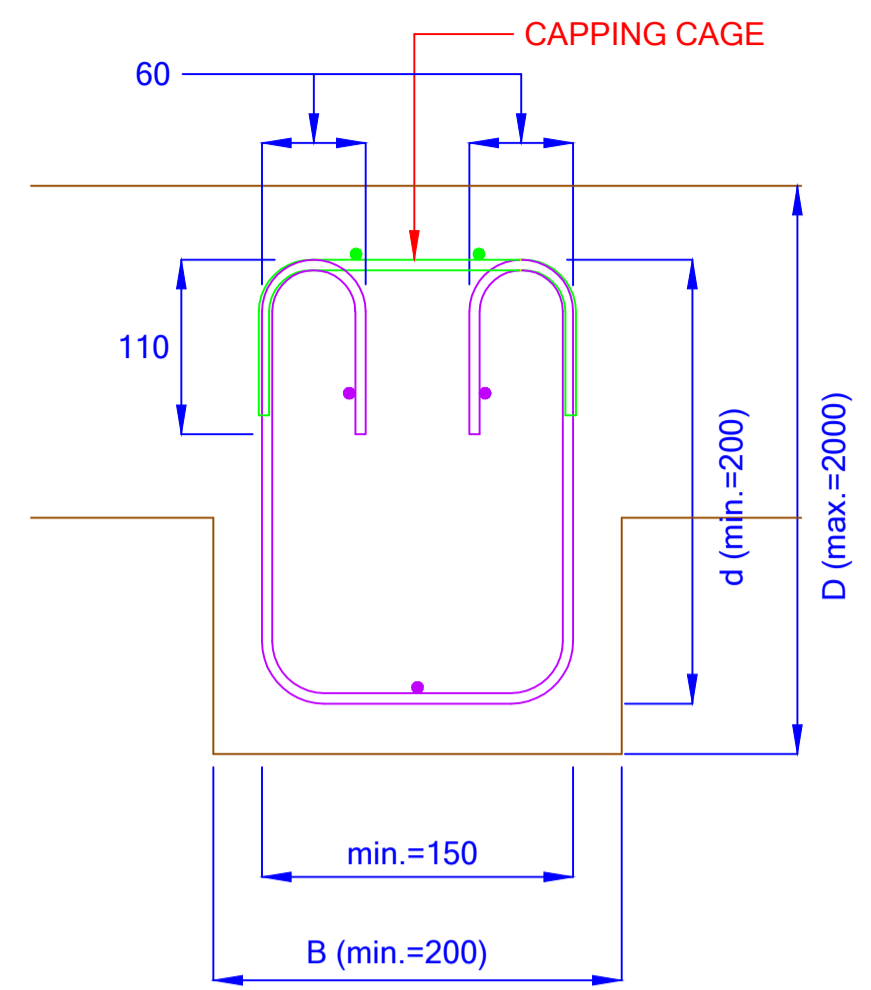
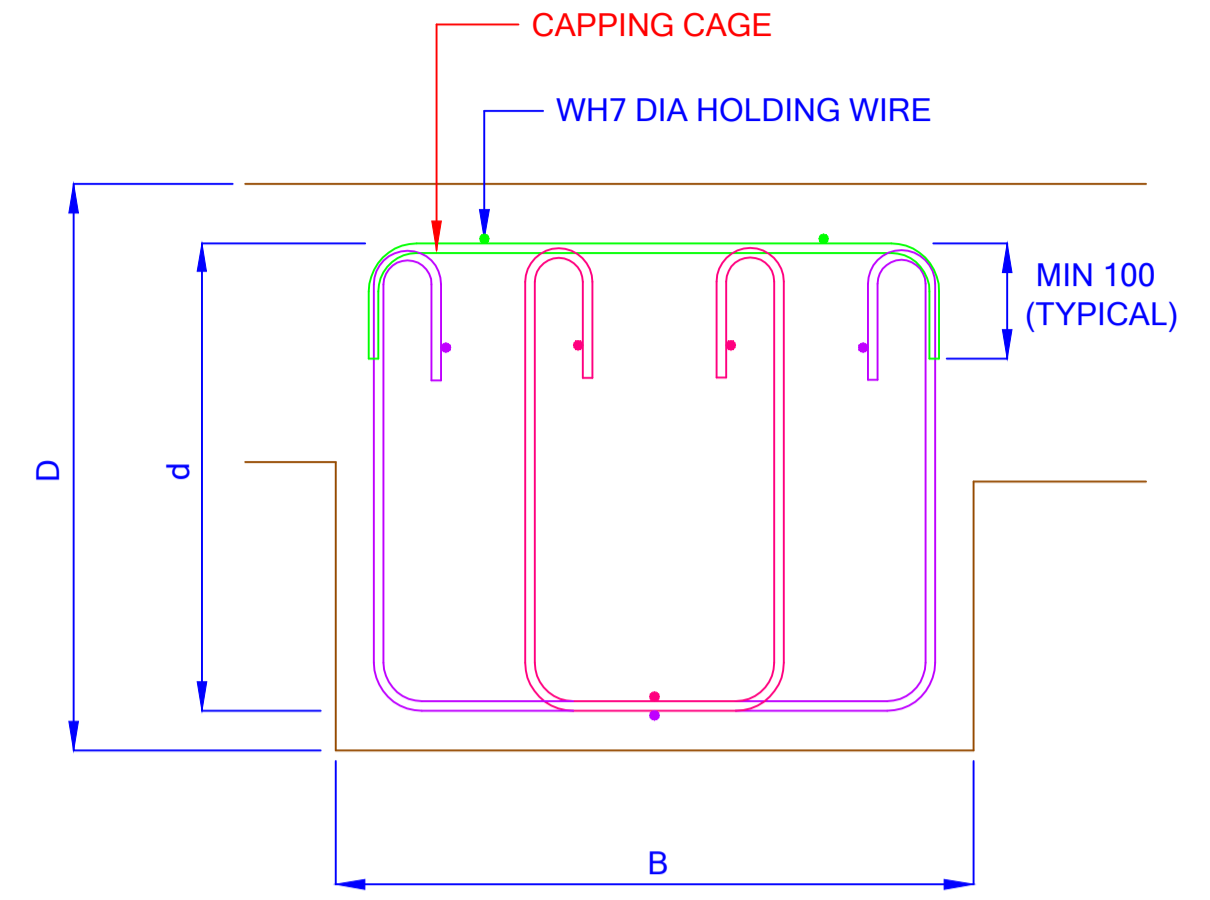


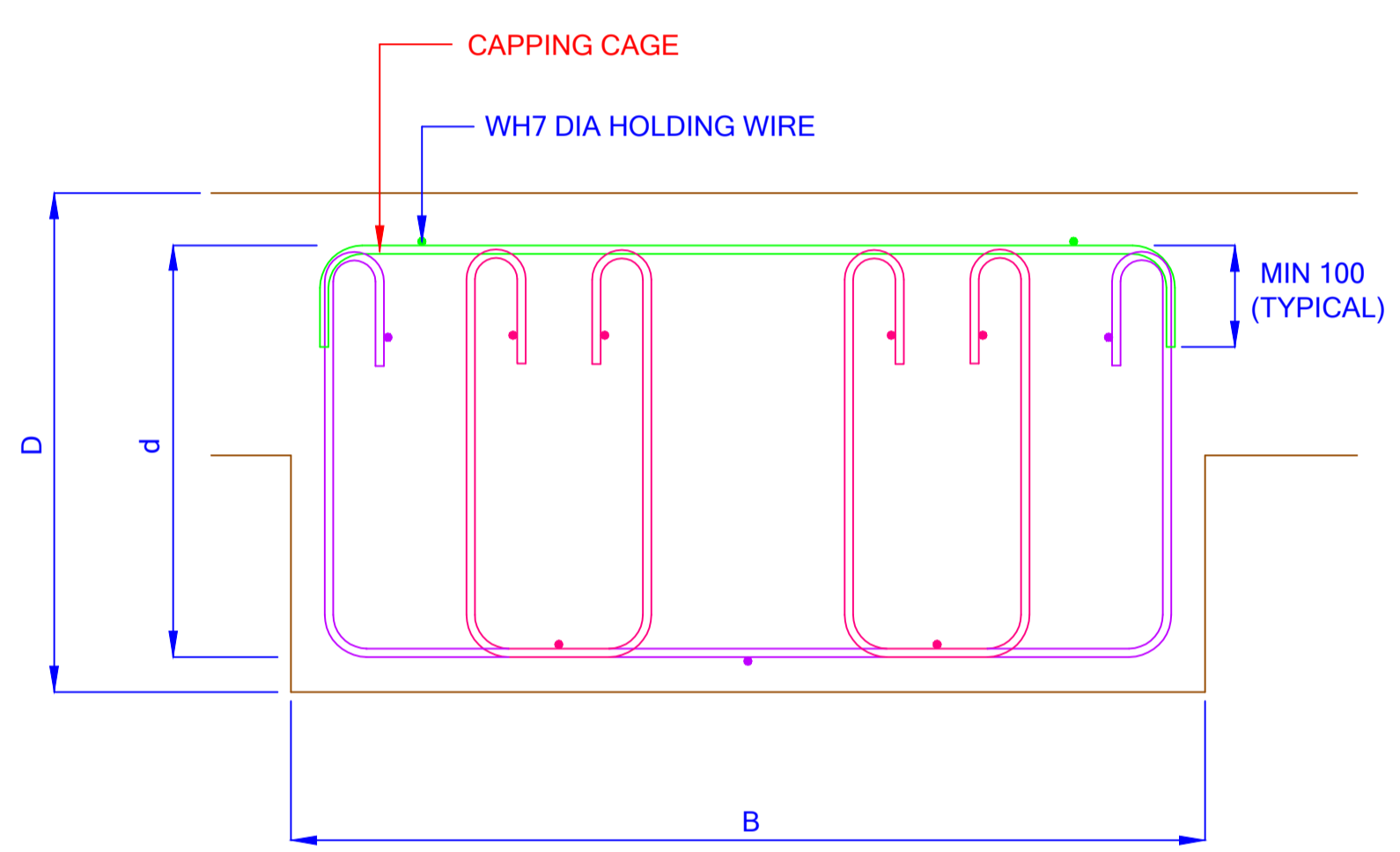
NOTES:
 SUBJECT TO MANUFACTURING AND TRANSPORTATION CONSTRAN.
 "Disclaimer: These drawings and detailing are for reference only and BRC is not liable for any consequences from the use of these drawings and detailing."



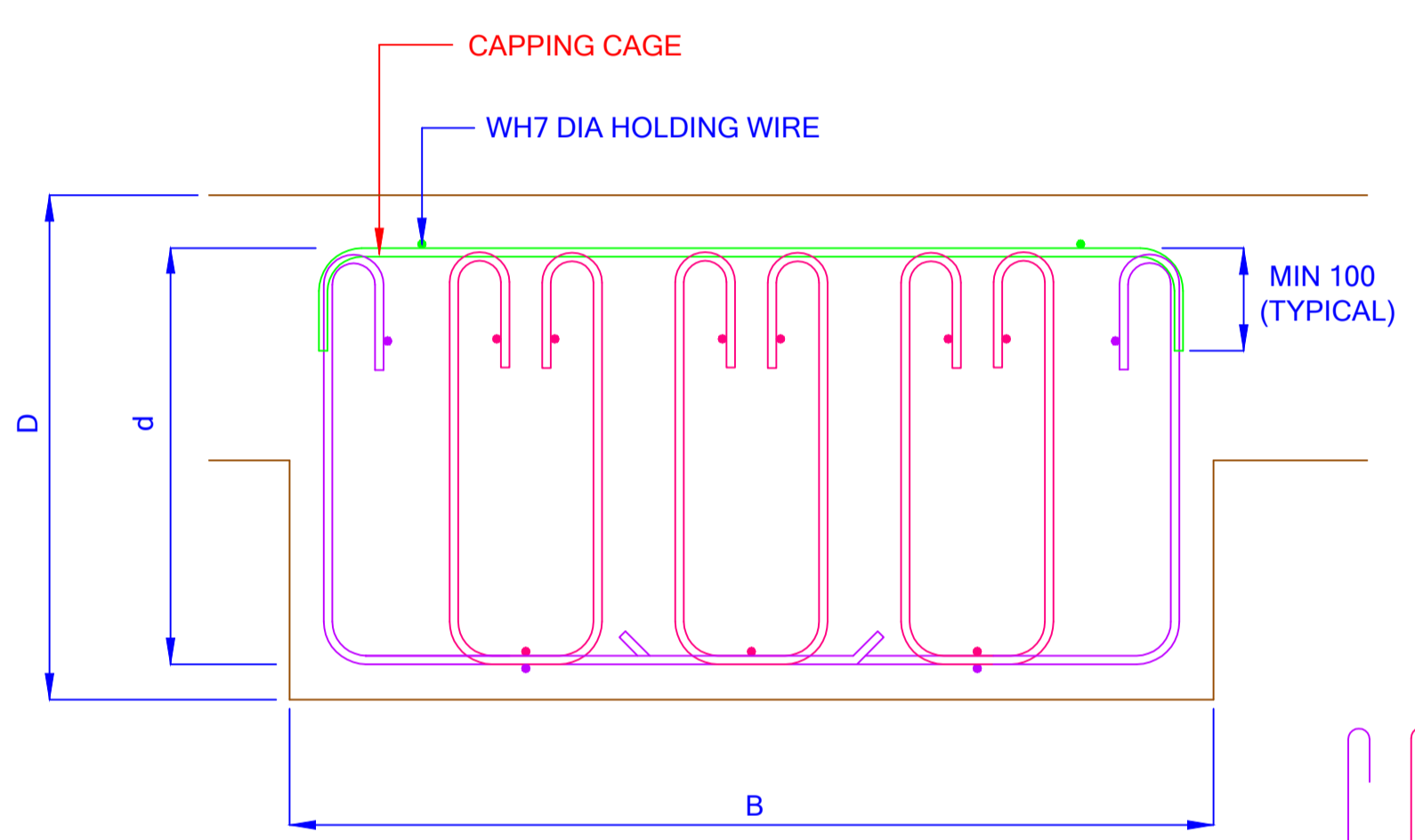
PROPOSED SINGLE OPEN BEAM CAGE STIRRUP (TYPE 1) FOR $200 \geq B < 400$ WIDTH



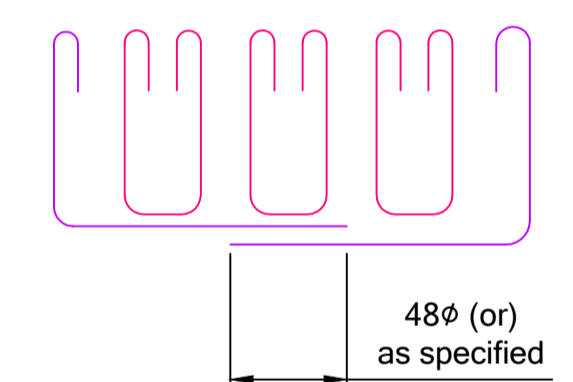
PROPOSED DOUBLE OPEN BEAM CAGE STIRRUP (TYPE 2) FOR $400 \geq B \leq 800$ WIDTH



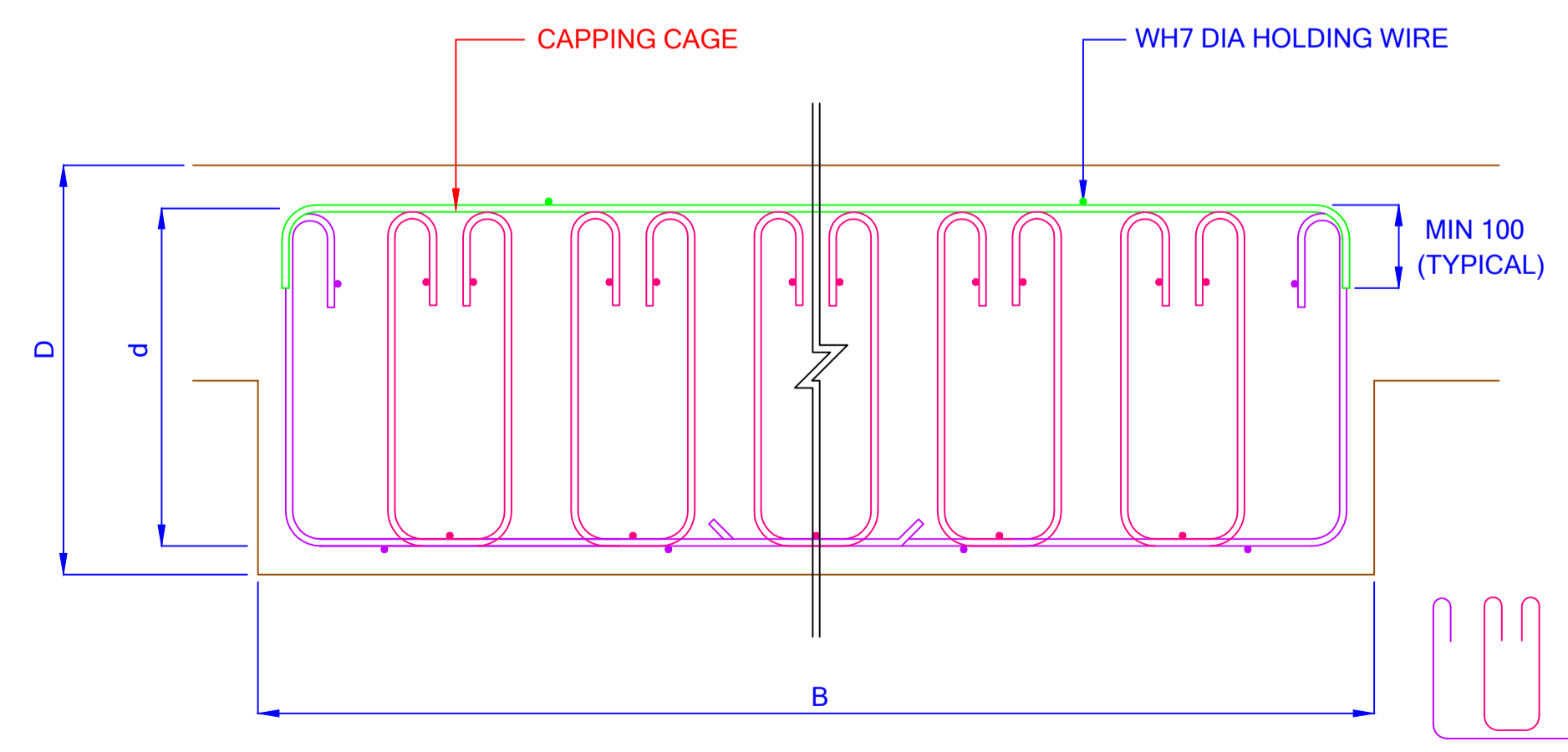
PROPOSED TRIBLE OPEN BEAM CAGE STIRRUP (TYPE 3) FOR $800 > B \leq 1200$ WIDTH



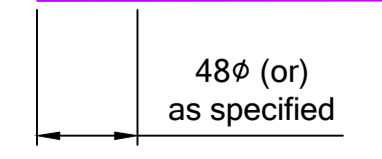
PROPOSED BEAM CAGE STIRRUP (TYPE 4) FOR BEAM WIDTH > 1200 mm



TYPICAL PT BEAM



PROPOSED PT BEAM CAGE
 Note: Beam details to be followed as per design



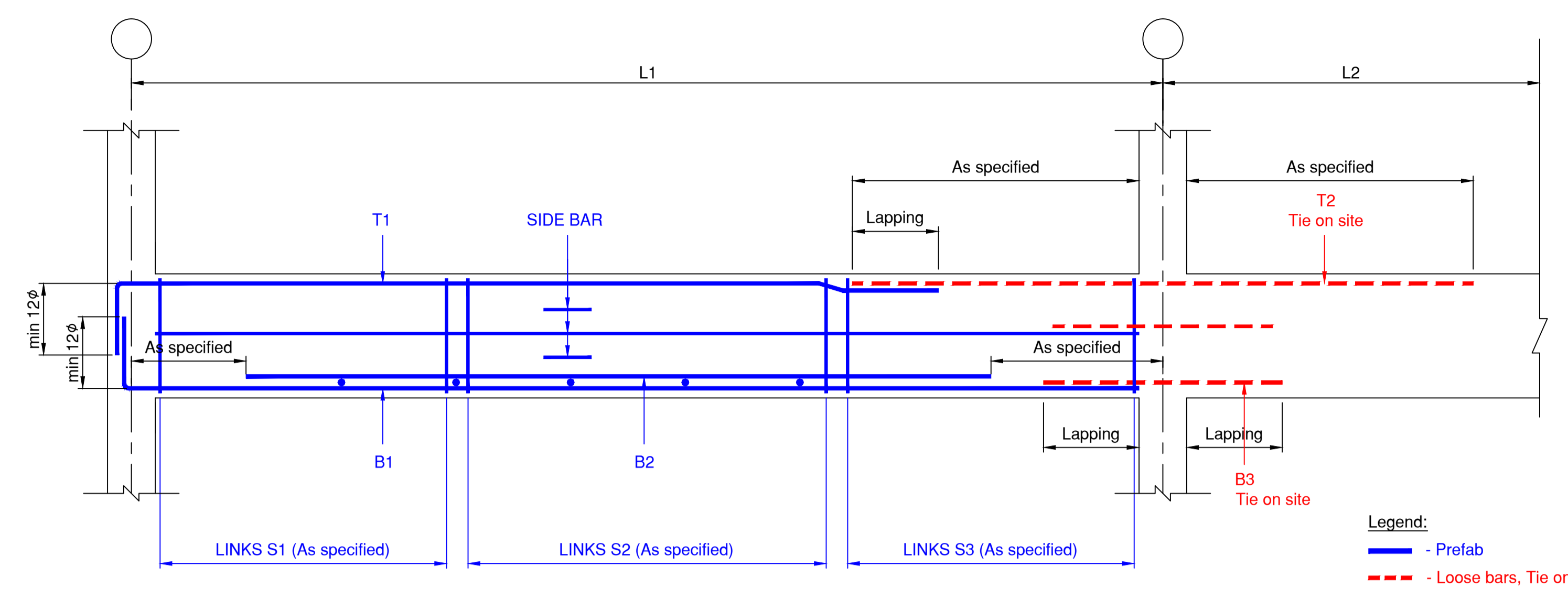
NOTE :
 a. HARDDRAWN DEFORMED WIRES OF CHARACTERISTIC STRENGTH $F_y = 500$ Mpa MANUFACTURED IN ACCORDANCE TO SS18 AND SS32 SHALL BE USED.
 b. POSITION AND SIZE OF HOLDING WIRES ARE MERELY FOR CAGE HOLDING PURPOSE AND SHALL BE DETERMINED BY THE MANUFACTURER.
 b. ONLY SHEAR REINFORCEMENT ARE CONVERTED. ALL TORSIONAL LINKS ARE TO REMAIN AS REBARS TO BE PROVIDED BY CONTRACTOR
 b. * DENOTES CAPPING TO FOLLOW BEAM LINK DIAMETER & SPACING SPECIFIED.

BRC Prefab
 The Art of Reinforcing
 BRC ASIA LIMITED
 350 Jalan Boon Lay, Jurong Town, Singapore 619530
 Telephone : 62652333 ; Fax : 62664728 (Engrg) ; 62652580 (Mktg)
 Website : www.brc.com.sg , email : sales@brc.com.sg

JOB TITLE :	
BRC PROPOSAL FOR BEAM CAGE	
EXTRACTED FROM DRAWING NO :	
DRAWING NO :	REV :
DATE :	DRAWN BY :
SCALE :	CHECKED BY :
FILE :	

NOTES:
 SUBJECT TO MANUFACTURING AND TRANSPORTATION CONSTRAN.
 Disclaimer: These drawings and detailing are for reference only and BRC is not liable for any consequences from the use of these drawings and detailing.

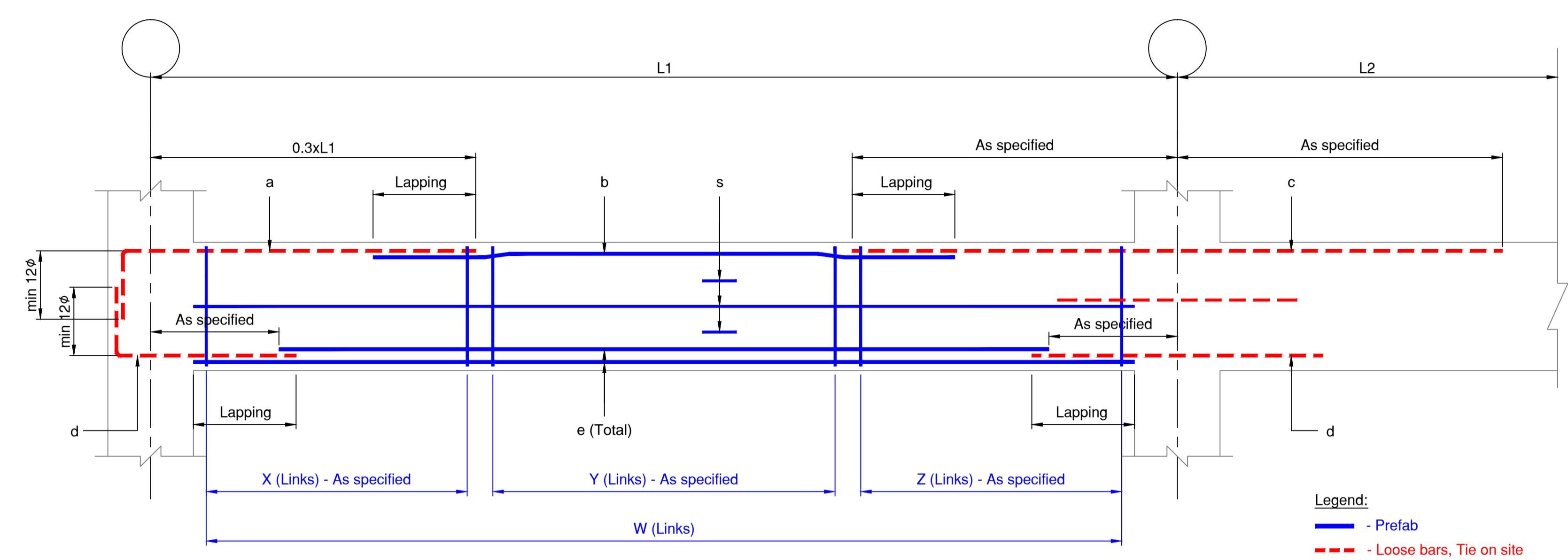
TYPE 1



TYPICAL PREFAB BEAM DETAILS (END SPAN)

Legend:
 — - Prefab
 - - - - Loose bars, Tie on site

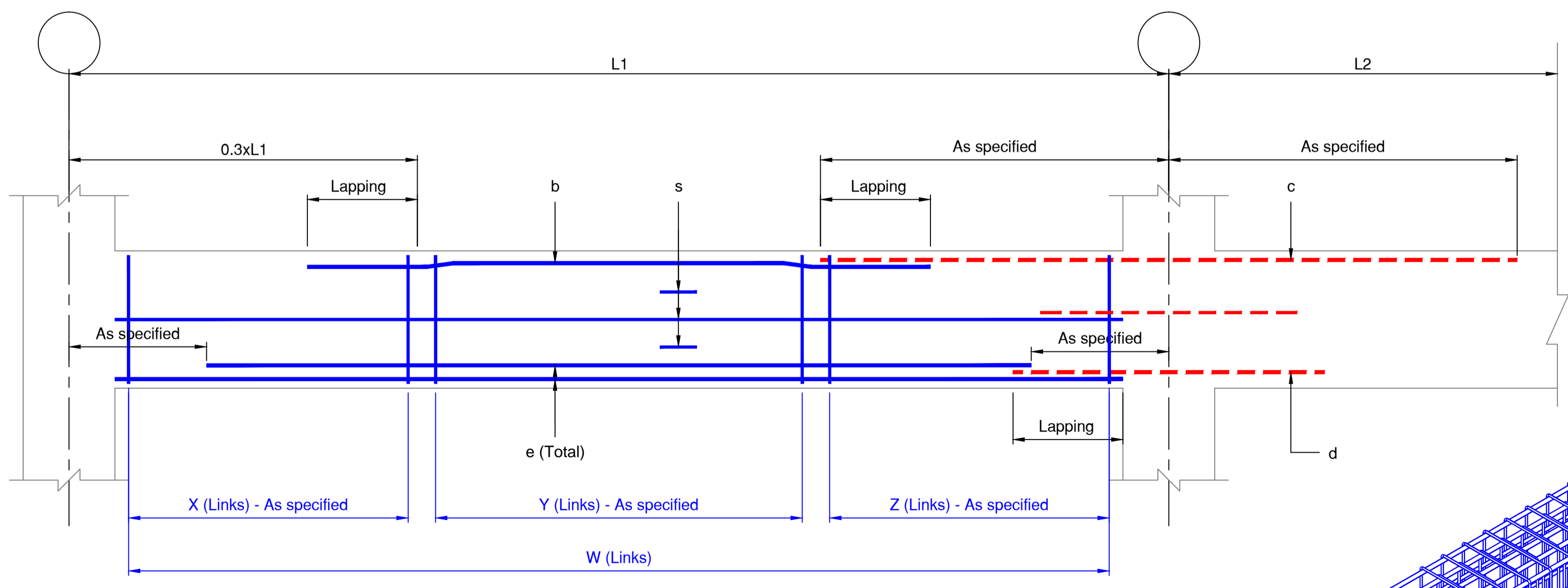
TYPE 2



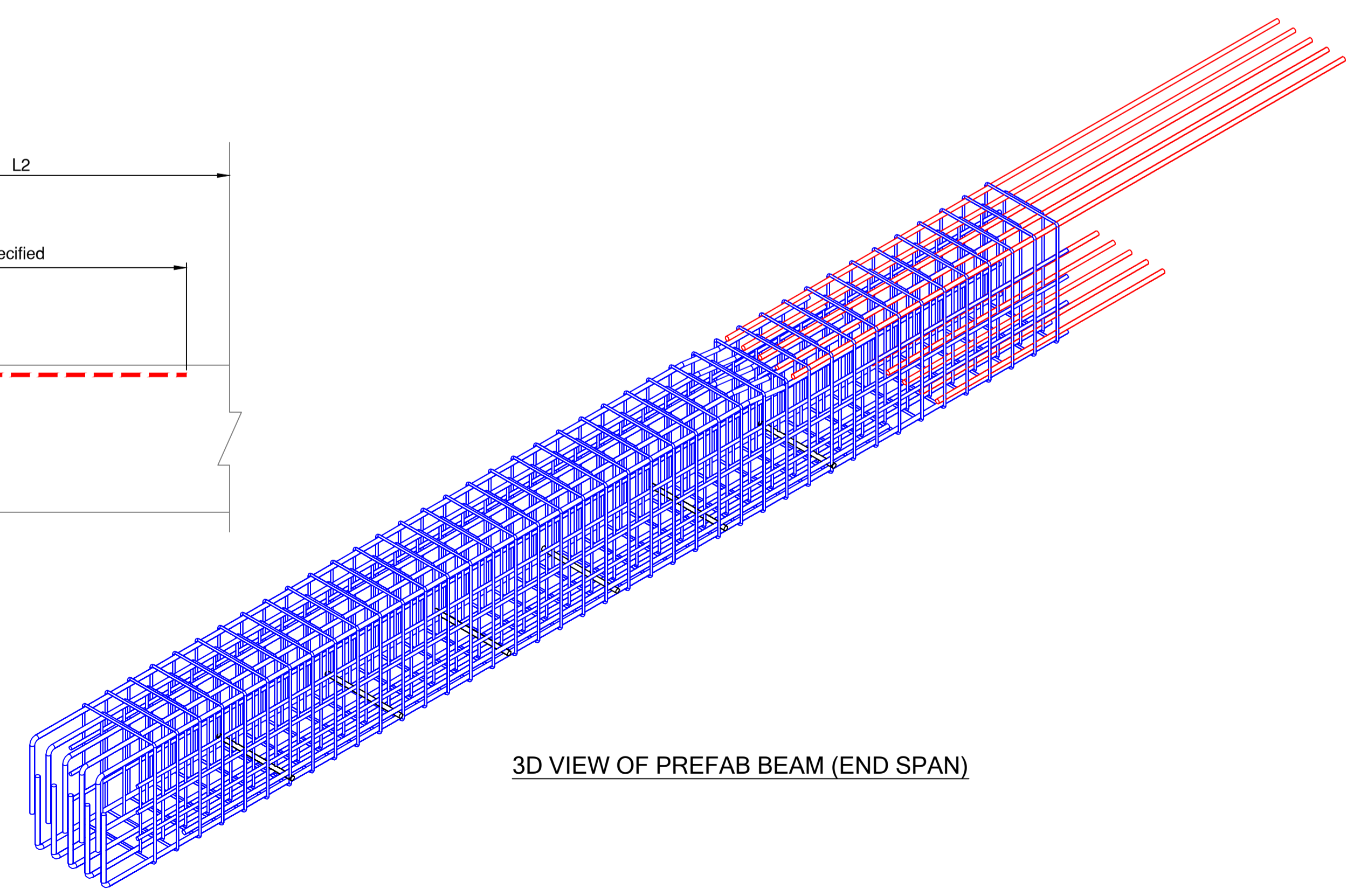
TYPICAL PREFAB BEAM DETAILS (END SPAN)

Legend:
 — - Prefab
 - - - - Loose bars, Tie on site

TYPICAL PREFAB BEAM DETAILS (MID SPAN) / CONTINUOUS BEAM



Legend:
 — - Prefab
 - - - - Loose bars, Tie on site
 (always with left side of prefab beam)



3D VIEW OF PREFAB BEAM (END SPAN)

BRC Prefab
The Art of Reinforcing
BRC ASIA LIMITED
 350 Jalan Boon Lay, Jurong Town, Singapore 619530
 Telephone : 62652333 ; Fax : 62664728 (Engrg) ; 62652580 (Mktg)
 Website : www.brc.com.sg , email : sales@brc.com.sg

JOB TITLE :
 BRC PROPOSAL FOR PREFAB BEAM

EXTRACTED FROM DRAWING NO :	
DRAWING NO :	REV :
DATE :	DRAWN BY :
SCALE :	CHECKED BY :
FILE :	